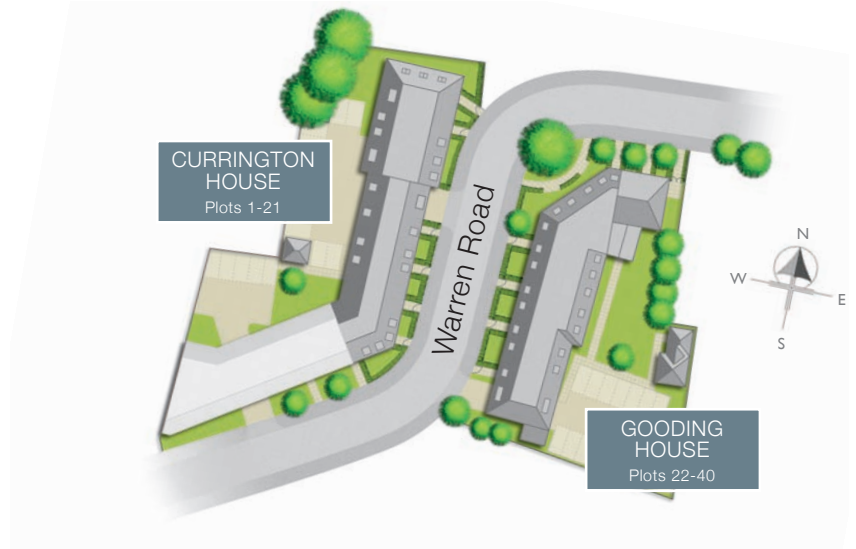


OLD DAIRY MEWS

Warren Road, Reigate, Surrey RH2 0BN

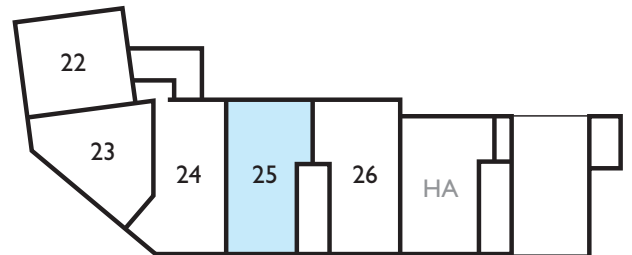
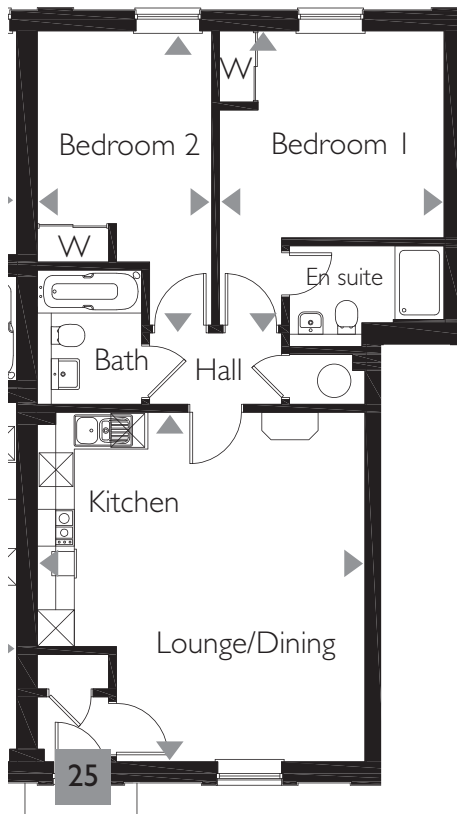
SITE PLAN



APARTMENT 25

Apartment 25 is a 757 sq ft ground floor apartment.

This apartment is set in Gooding House and features its own private entrance along with two bathrooms and two bedrooms both with fitted wardrobes.



GROUND FLOOR

Lounge/Kitchen	5.70m x 5.30m	18' 8" x 17' 4"
Bedroom 1	4.79m x 3.65m	15' 9" x 12' 10"
Bedroom 2	4.79m x 2.84m	15' 9" x 9' 4"

* = Max HA = Housing Association

For more information please call: 01372 225007

SHANLY
HOMES

◀ Point from which dimensions are measured. Dimensions are intended for guidance only and may vary by plus or minus 7.6cm/3". The plots shown indicate general layout which may vary slightly. Please consult a Sales Advisor for more information.