



# WATERSIDE QUARTER TRE ARCHI | CORE 1



## APARTMENT 1

One bedroom apartment

This home has been designed with modern, contemporary living in mind. The open-plan kitchen/dining/living area is a bright, welcoming space with ample room for comfortable homeworking. The kitchen features sleek, high-specification, integrated appliances which will make preparing meals a pleasure.

Situated on the ground floor of Tre Archi, this apartment directly overlooks the rejuvenated waterways and comes with private underground gated parking and car charging points. The generous double bedroom enjoys a fitted wardrobe and conveniently has a separate door to the contemporary bathroom, which is also accessed via the hallway.

Total internal area: 50.28 sq. mts. 541 sq. ft.



# WATERSIDE QUARTER TRE ARCHI | CORE 1

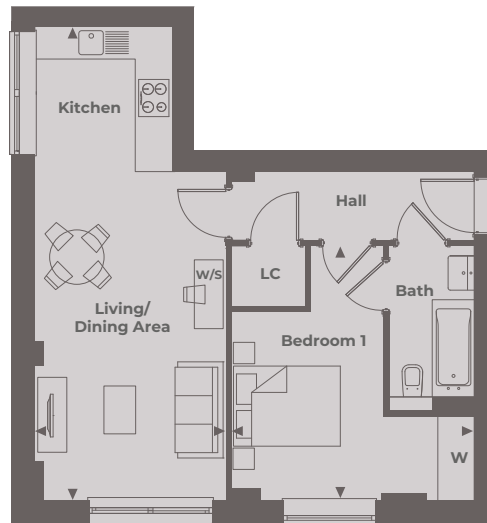
## APARTMENT 1 ▶

One bedroom

*Kitchen/Dining/Living Area*  
8.27 m x 3.39 m 27'2" x 11'1"

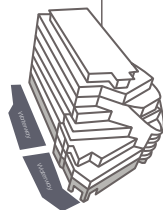
*Bedroom 1*  
4.41 m x 4.25 m 14'6" x 13'10"

**Total Internal Area**  
**50.28 sq. mts. 541 sq. ft.**

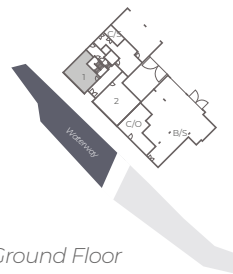


Waterway

Tre Archi Apartments



Floor Locator



Ground Floor

◀ Point from which maximum dimensions are measured. Dimensions are intended for guidance only and may vary by plus or minus 7.6cm/3". The plots indicate general layout only which may vary from other plots. Kitchen and bathroom layouts indicative only. W denotes Wardrobe. LC denotes Linen Cupboard. S denotes Storage. E/S denotes En-Suite. W/S denotes Workstation. (h) denotes Handed. Please contact sales consultant for more information.