



ASHCROFT PLACE

STAINES-UPON-THAMES

LANGLEY ROAD | STAINES-UPON-THAMES | SURREY | TW18 2EH



Computer generated image of plots 11 - 14

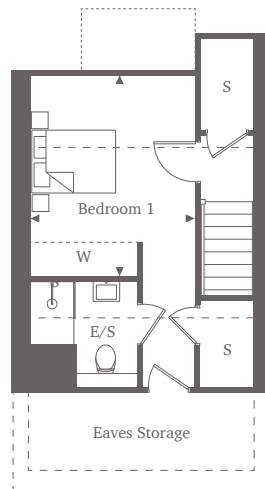
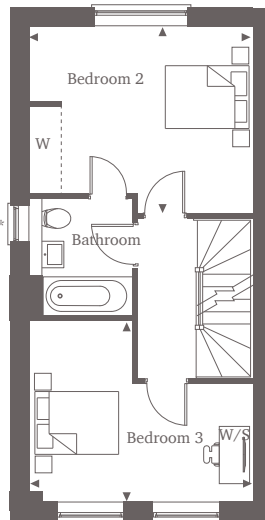
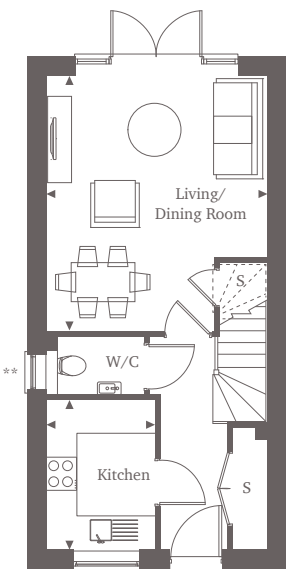


This site plan is a guide for illustrative purposes only. Landscaping shown is indicative only.

Plots 12(h), 13 & 14

Three Bedroom Home 98.94 sq m | 1065 sq ft

Experience the perfect blend of style and comfort in this 3-bedroom home located on Langley Road. Private parking is provided with two parking spaces. The entrance leads to a kitchen with integrated appliances and ample counter space, accompanied by a convenient downstairs W/C. Moving through the property, the living/dining area awaits at the back, featuring bay doors that open to the spacious garden. On the first floor, you'll find two double bedrooms positioned on either side of the property, sharing a spacious bathroom in between. Bedroom 2 features a built-in wardrobe, while bedroom 3 offers ample space for a study area. The second floor is dedicated to the master bedroom, which boasts a built-in wardrobe, an en-suite bathroom, and ample storage space, including the eaves.



Ground Floor

Living/Dining Room
4.80m* x 4.17m* 15'9" x 13'8"

Kitchen
2.70m x 2.05m 8'9" x 6'9"

First Floor

Bedroom 2
4.17m x 3.43m* 15'9" x 11'3"

Bedroom 3
4.17m* x 3.21m* 15'9" x 10'5"

Second Floor

Bedroom 1
3.54m x 3.05m 11'6" x 10'0"

For more information, please call 01784 913 033

shanlyhomes.com



◀ Point from which maximum dimensions are measured. * Denotes (max) dimension. Dimensions are intended for guidance only and may vary by plus or minus 7.6cm/3". ** Denotes window only applicable on plot 14. The plots indicate general layout only which may vary from other plots. Kitchen and bathroom layouts indicative only. S denotes storage. W denotes wardrobe. E/S denotes en-suite. W/S denotes work station. Please contact a sales consultant for more information.