



WATERSIDE QUARTER TRE ARCHI | CORE 2



APARTMENTS 30, 36

One bedroom apartments

These stylish apartments situated on the fourth or fifth floor of Tre Archi have been designed to maximise the space. The bright kitchen/dining/living area is the central hub of these homes, with the open-plan layout making it perfect for today's flexible lifestyles. Set up a workstation for the days when you don't want to commute, or invite friends over for a meal cooked in your smart kitchen with its sleek, high-specification, integrated appliances.

The spacious double bedroom enjoys a fitted wardrobe, with a contemporary bathroom just next door. There is also a useful linen cupboard off the welcoming hallway. Your new home comes with a range of additional benefits including private underground gated parking and car charging points.

Total internal area: 58.26 sq. mts. 627 sq. ft.



WATERSIDE QUARTER TRE ARCHI | CORE 2

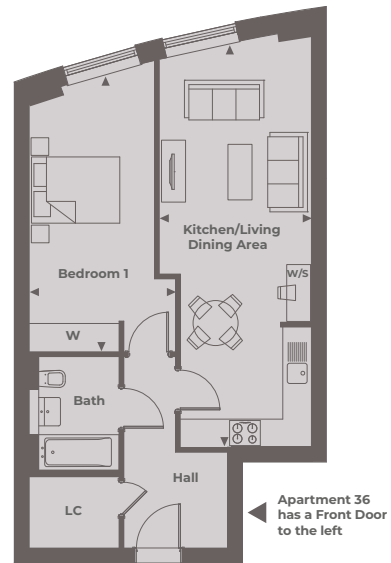
APARTMENTS 30, 36 ▶

One bedroom

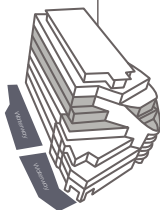
Kitchen/Dining/Living Area
8.50 m x 3.20 m 27'11" x 10'5"

Bedroom 1
5.90 m x 3.00 m 19'4" x 9'10"

Total Internal Area
58.26 sq. mts. 627 sq. ft.



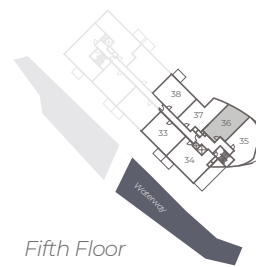
Tre Archi Apartments



Floor Locator



Fourth Floor



Fifth Floor

◀ Point from which maximum dimensions are measured. Dimensions are intended for guidance only and may vary by plus or minus 7.6cm/3". The plots indicate general layout only which may vary from other plots. Kitchen and bathroom layouts indicative only. W denotes Wardrobe. LC denotes Linen Cupboard. S denotes Storage. E/S denotes En-Suite. W/S denotes Workstation. (h) denotes Handed. Please contact sales consultant for more information.