



LIGHTFIELD

HIGH ST. BARNET, LONDON



APARTMENT 24, 35 & 46

ONE BEDROOM

A STUNNING ONE BEDROOM APARTMENT STYLISHLY DESIGNED TO MAXIMISE SPACE FOR EVERYDAY LIFESTYLES. YOU WILL FIND AN OPEN PLAN KITCHEN/LIVING/DINING AREA WITH A BALCONY, AN AREA FOR HOMEWORKING AND A SPACIOUS BEDROOM ALL JUST 30 MINUTES AWAY FROM THE CITY.

Total Internal Area
53.1 sq m | 571 sq ft



LIGHTFIELD

HIGH ST. BARNET, LONDON

APARTMENT 24, 35 & 46

ONE BEDROOM

Kitchen/Living/Dining Area

6.03m x 4.06m 19'9" x 13'3"

Bedroom

4.85m x 3.13m 15'10" x 10'3"

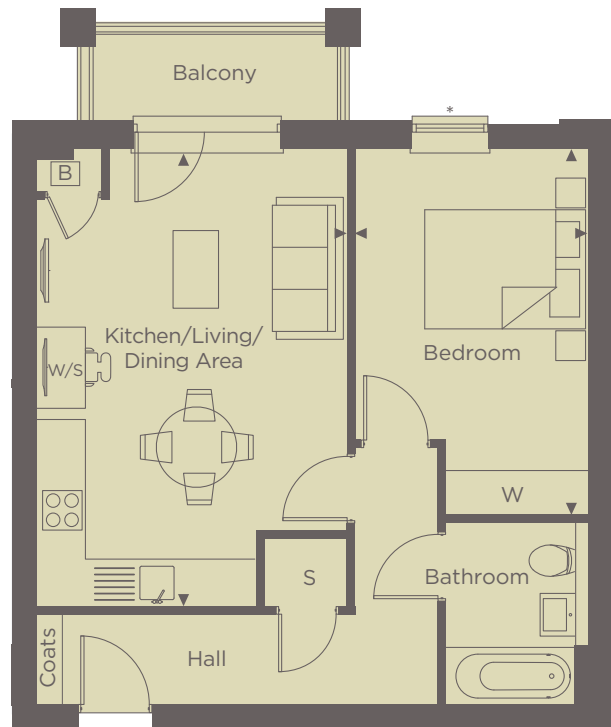
Balcony

3.65m x 1.30m 11'10" x 4'2"

Internal Area

53.1 sq m 571 sq ft

* Window arrangement to plots 24 and 46



◀ Point from which maximum dimensions are measured. Dimensions are intended for guidance only and may vary by plus or minus 7.6cm/3". The plots indicate general layout only which may vary from other plots. Kitchen and bathroom layouts indicative only. W denotes wardrobe. S denotes storage. E/S denotes en-suite. W/S denotes workstation. L denotes lift. Please contact sales consultant for more information.

For more information please call 01494 685825 or shanlyhomes.com

SHANLY
HOMES