



WATERSIDE QUARTER
MAIDENHEAD

TRE ARCHI APARTMENTS

SHANLY
— HOMES —



Welcome to Waterside Quarter

The Tre Archi Apartment Collection forms the last phase at Waterside Quarter. Offering contemporary living in the heart of Maidenhead with private underground gated parking, car charging points and a luxurious specification, this selection of one and two bedroom apartments couldn't be better located.

The Tre Archi Apartments sit on the bank of the rejuvenated Maidenhead waterways, a new, stylish social hub of restaurants and bars, with the convenience of London Paddington being on a 18 minute train journey. With the new Elizabeth line open commuting to Central London for work or pleasure has never been easier with express train links running every 5 minutes. Experience an enviable lifestyle that living at Waterside Quarter can only bring.





◀ APARTMENTS 1, 11, 20

Two bedroom

Kitchen/Living/Dining Area
8.70 m x 3.30 m 28'6" x 10'9"

Bedroom 1
5.00 m x 2.90 m 16'4" x 9'6"

Bedroom 2
3.70 m x 2.70 m 12'1" x 8'10"

Balcony
2.93 m x 1.83 m 9'8" x 6'0"

Terrace (Apartment 11)
5.65 m x 1.35 m 18'6" x 4'5"

Terrace (Apartment 20)
6.00 m x 1.35 m 19'8" x 4'5"

Total Internal Area
67.05 sq. mts. 722 sq. ft.



APARTMENTS 2, 12, 21 ▶

Two bedroom

Kitchen/Living/Dining Area
7.00 m x 3.20 m 22'11" x 10'5"

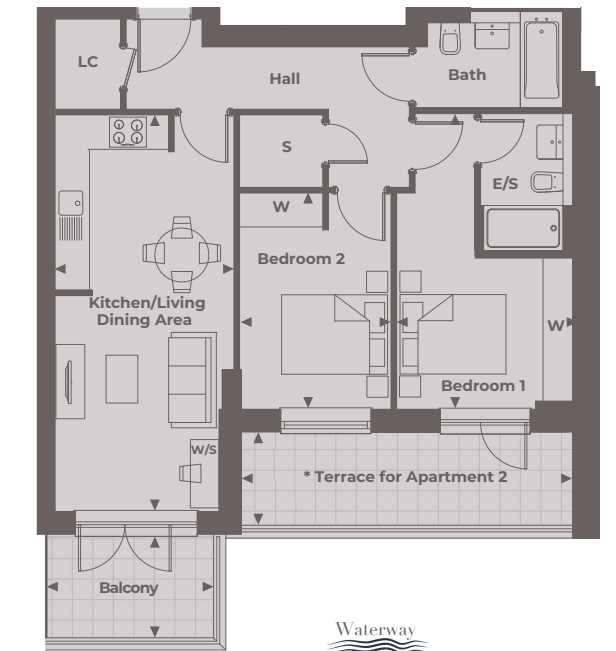
Bedroom 1
5.20 m x 3.20 m 17'0" x 10'5"

Bedroom 2
3.80 m x 2.70 m 12'5" x 8'10"

Balcony
2.93 m x 1.83 m 9'8" x 6'0"

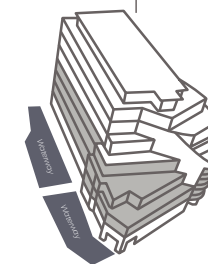
Terrace (Apartment 2)
5.83 m x 1.35 m 19'2" x 4'5"

Total Internal Area
66.38 sq. mts. 714 sq. ft.



Ideal for contemporary lifestyles, Tre Archi Apartments at Waterside Quarter include clever design details and stylish finishing touches to enhance your life.

Tre Archi Apartments



Floor Locator



First Floor



Second Floor



Third Floor

◀ Point from which maximum dimensions are measured. Dimensions are intended for guidance only and may vary by plus or minus 7.6cm/3". The plots indicate general layout only which may vary from other apartments. Kitchen and bathroom layouts indicative only. W denotes wardrobe. LC - linen cupboard. C/O - concierge office. C/S - cycle storage. B/S - bins storage. Please contact sales consultant for more information.



APARTMENTS 3, 13

Two bedroom

Kitchen/Living/Dining Area
8.00 m x 3.60 m 26'2" x 11'9"

Bedroom 1 (Apartment 3)
6.50 m x 2.80 m 21'3" x 9'2"

Bedroom 1 (Apartment 13)
6.50 m x 3.20 m 21'3" x 10'5"

Bedroom 2
4.30 m x 2.70 m 14'11" x 8'10"

Balcony
5.76 m x 1.83 m 18'11" x 6'0"

Total Internal Area
76.55 sq. mts. 824 sq. ft. (Apartment 3)
77.95 sq. mts. 839 sq. ft. (Apartment 13)

*Wider bedroom for Apartment 13



APARTMENT 4

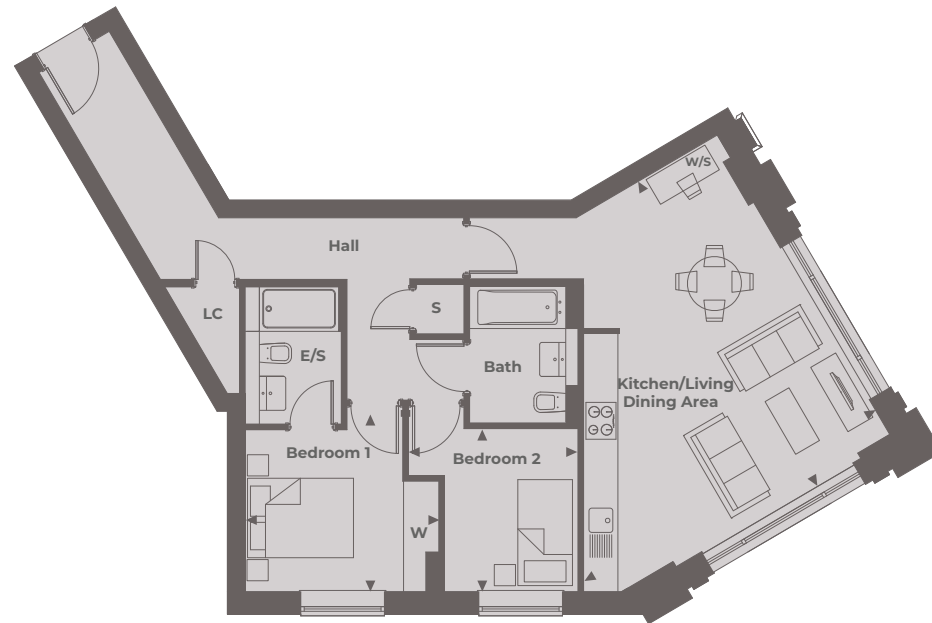
Two bedroom

Kitchen/Living/Dining Area
6.20 m x 6.00 m 20'4" x 19'8"

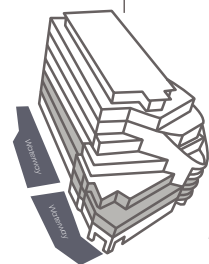
Bedroom 1
3.40 m x 3.30 m 11'1" x 10'9"

Bedroom 2
3.00 m x 2.90 m 9'10" x 9'6"

Total Internal Area
75.53 sq. mts. 813 sq. ft.



Tre Archi Apartments



Floor Locator



First Floor



Second Floor

Point from which maximum dimensions are measured. Dimensions are intended for guidance only and may vary by plus or minus 7.6cm/3". The plots indicate general layout only which may vary from other apartments. Kitchen and bathroom layouts indicative only. W denotes wardrobe. LC - linen cupboard. C/O - concierge office. C/S - cycle storage. B/S - bins storage. Please contact sales consultant for more information.



APARTMENT 5

One bedroom

Kitchen/Living/Dining Area
6.80 m x 3.80 m 22'3" x 12'5"

Bedroom 1
4.80 m x 2.90 m 15'8" x 9'6"

Total Internal Area
48.82 sq. mts. 526 sq. ft.

APARTMENT 6

Two bedroom

Kitchen/Living/Dining Area
8.00 m x 3.30 m 26'2" x 10'9"

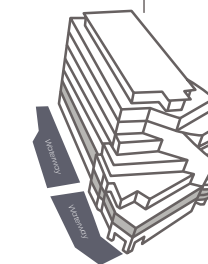
Bedroom 1
4.80 m x 2.80 m 15'8" x 9'2"

Bedroom 2
4.90 m x 2.60 m 16'0" x 8'6"

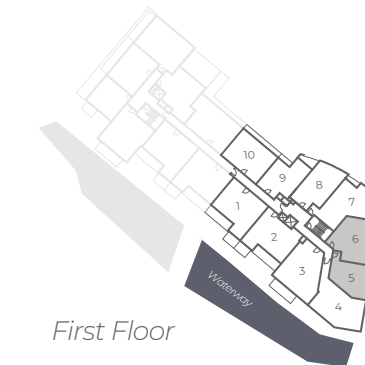
Total Internal Area
70.55 sq. mts. 759 sq. ft.



Tre Archi Apartments



Floor Locator



First Floor

Point from which maximum dimensions are measured. Dimensions are intended for guidance only and may vary by plus or minus 7.6cm/3". The plots indicate general layout only which may vary from other apartments. Kitchen and bathroom layouts indicative only. W denotes wardrobe. LC - linen cupboard. C/O - concierge office. C/S - cycle storage. B/S - bins storage. Please contact sales consultant for more information.



APARTMENT 7

One bedroom

Kitchen/Living/Dining Area
7.30 m x 6.70 m 23'11" x 21'11"

Bedroom 1
6.40 m x 3.00 m 20'11" x 9'10"

Balcony A
3.80 m x 1.25 m 12'6" x 4'1"

Balcony B
2.68 m x 0.91 m 8'9" x 3'0"

Total Internal Area
77.30 sq. mts. 832 sq. ft.

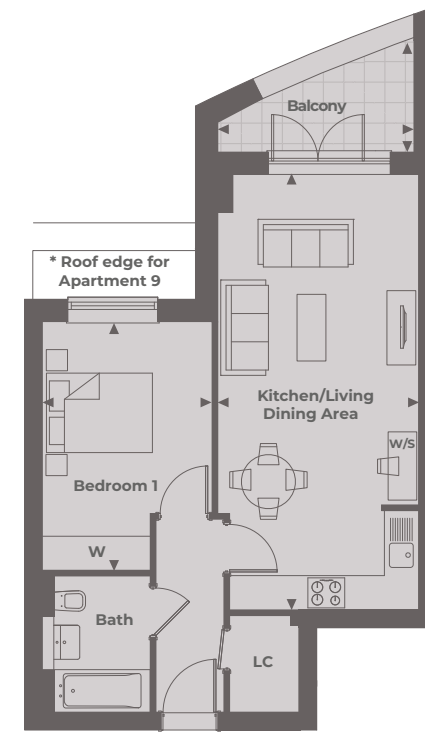
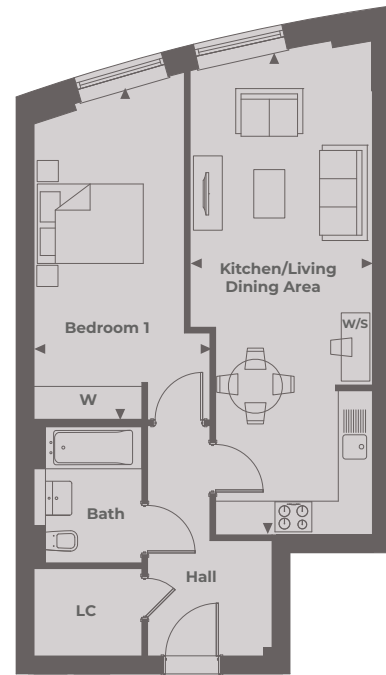
APARTMENTS 8, 17, 24

One bedroom

Kitchen/Living/Dining Area
8.50 m x 3.20 m 27'10" x 10'5"

Bedroom 1
5.80 m x 3.10 m 19'0" x 10'2"

Total Internal Area
57.87 sq. mts. 622 sq. ft.



APARTMENTS 9, 18, 25

One bedroom

Kitchen/Living/Dining Area
7.70 m x 3.50 m 25'3" x 11'5"

Bedroom 1
4.40 m x 3.00 m 14'5" x 9'10"

Balcony
3.46 m x 2.01 m 11'4" x 6'7"

Total Internal Area
51.14 sq. mts. 550 sq. ft.

APARTMENTS 10, 19, 26

Two bedroom

Kitchen/Living/Dining Area
6.90 m x 3.30 m 22'7" x 10'9"

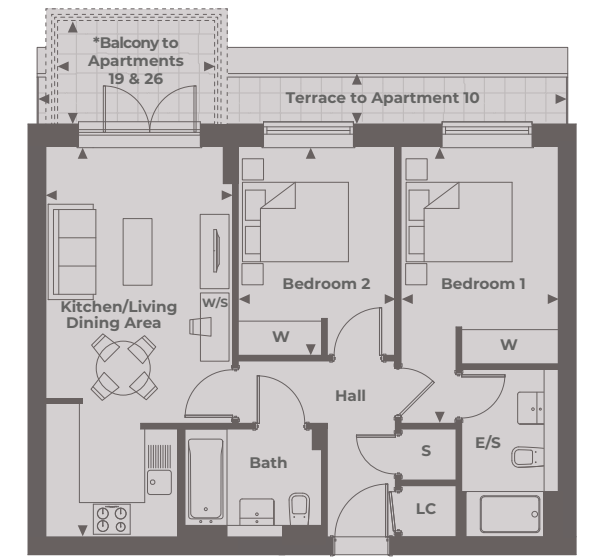
Bedroom 1
4.90 m x 2.80 m 16'0" x 9'2"

Bedroom 2
3.70 m x 2.80 m 12'1" x 9'2"

Terrace (Apartment 10)
9.23 m x 0.89 m 30'3" x 2'10"

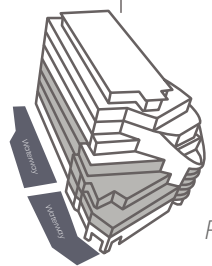
Balcony (Apartments 19 & 26)*
2.75 m x 1.85 m 9'0" x 6'1"

Total Internal Area
62.24 sq. mts. 670 sq. ft.



*Dashed outline shows Apartment 19 & 26

Tre Archi Apartments



Floor Locator



First Floor



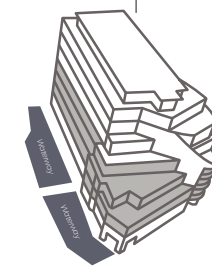
Second Floor



Third Floor

Point from which maximum dimensions are measured. Dimensions are intended for guidance only and may vary by plus or minus 7.6cm/3". The plots indicate general layout only which may vary from other apartments. Kitchen and bathroom layouts indicative only. W denotes wardrobe, LC - linen cupboard, C/O - concierge office, C/S - cycle storage, B/S - bins storage. Please contact sales consultant for more information.

Tre Archi Apartments



Floor Locator



First Floor

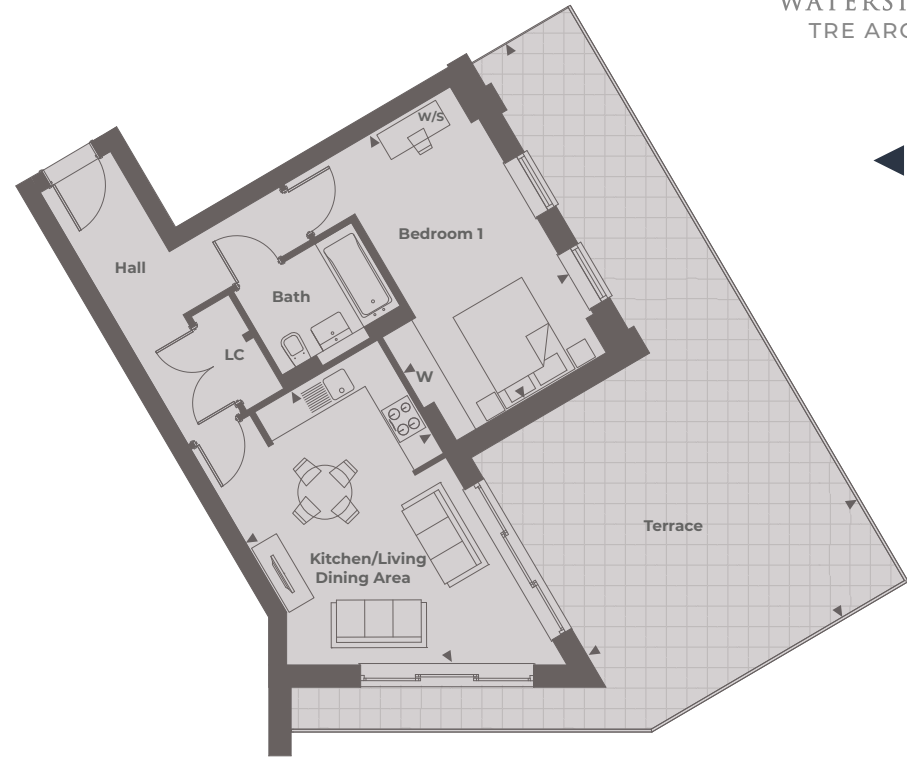


Second Floor



Third Floor

Point from which maximum dimensions are measured. Dimensions are intended for guidance only and may vary by plus or minus 7.6cm/3". The plots indicate general layout only which may vary from other apartments. Kitchen and bathroom layouts indicative only. W denotes wardrobe, LC - linen cupboard, C/O - concierge office, C/S - cycle storage, B/S - bins storage. Please contact sales consultant for more information.



APARTMENT 14

One bedroom

Kitchen/Living/Dining Area
5.60 m x 3.80 m 18'4" x 12'5"

Bedroom 1
5.40 m x 3.40 m 17'8" x 11'1"

Terrace
11.62 m x 5.56 m 38'2" x 18'3"

Total Internal Area
54.97 sq. mts. 592 sq. ft.



APARTMENT 15

One bedroom

Kitchen/Living/Dining Area
5.60 m x 5.00 m 18'5" x 16'4"

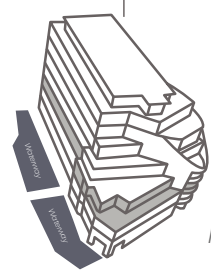
Bedroom 1
4.60 m x 3.40 m 15'1" x 11'1"

Terrace
9.80 m x 2.03 m 32'2" x 6'8"

Total Internal Area
51.18 sq. mts. 551 sq. ft.



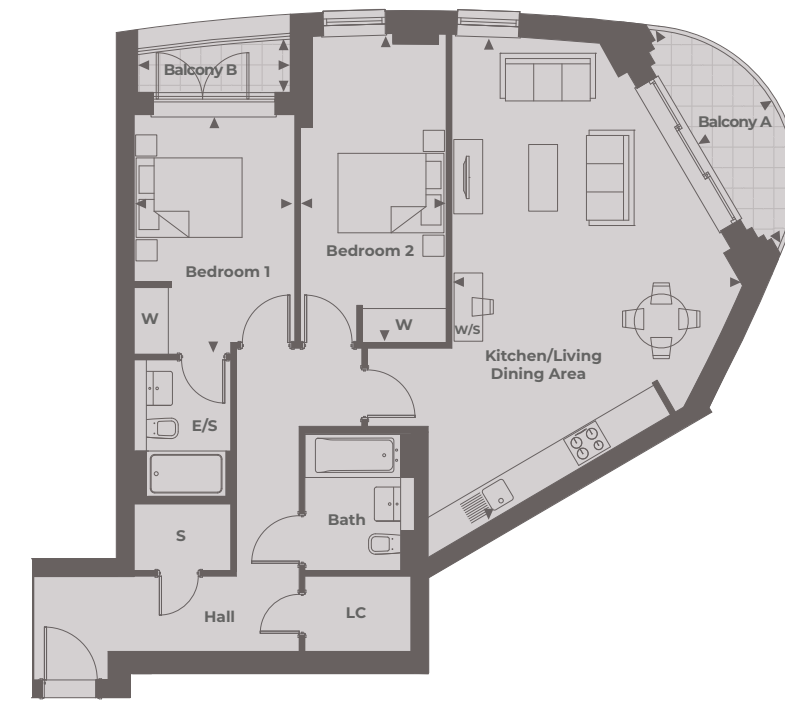
Tre Archi Apartments



Floor Locator Second Floor



◀ Point from which maximum dimensions are measured. Dimensions are intended for guidance only and may vary by plus or minus 7.6cm/3". The plots indicate general layout only which may vary from other apartments. Kitchen and bathroom layouts indicative only. W denotes wardrobe. LC - linen cupboard. C/O - concierge office. C/S - cycle storage. B/S - bins storage. Please contact sales consultant for more information.



APARTMENT 16

Two bedroom

Kitchen/Living/Dining Area
8.50 m x 5.10 m 27'10" x 16'8"

Bedroom 1
4.20 m x 2.80 m 13'3" x 9'2"

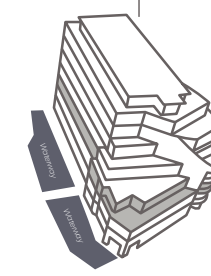
Bedroom 2
5.40 m x 2.60 m 17'8" x 8'6"

Balcony A
3.80 m x 1.25 m 12'6" x 4'1"

Balcony B
2.68 m x 0.91 m 8'9" x 3'0"

Total Internal Area
90.75 sq. mts. 977 sq. ft.

Tre Archi Apartments



Floor Locator Second Floor



◀ Point from which maximum dimensions are measured. Dimensions are intended for guidance only and may vary by plus or minus 7.6cm/3". The plots indicate general layout only which may vary from other apartments. Kitchen and bathroom layouts indicative only. W denotes wardrobe. LC - linen cupboard. C/O - concierge office. C/S - cycle storage. B/S - bins storage. Please contact sales consultant for more information.



APARTMENT 22

Two bedroom

Kitchen/Living/Dining Area
7.40 m x 4.20 m 24'3" x 13'9"

Bedroom 1
7.50 m x 3.60 m 24'7" x 11'9"

Bedroom 2
4.90 m x 3.30 m 16'1" x 10'9"

Terrace
18.84 m x 8.07 m 61'9" x 26'6"

Total Internal Area
84.44 sq. mts. 909 sq. ft.

APARTMENT 23

Two bedroom

Kitchen/Living/Dining Area
9.20 m x 5.10 m 30'2" x 16'8"

Bedroom 1
5.40 m x 2.60 m 17'8" x 8'6"

Bedroom 2
4.20 m x 2.80 m 13'9" x 9'2"

Balcony A
3.81 m x 1.25 m 12'6" x 4'1"

Balcony B
2.68 m x 0.91 m 8'9" x 3'0"

Total Internal Area
95.22 sq. mts. 1025 sq. ft.



APARTMENTS 27, 33

Two bedroom

Kitchen/Living/Dining Area
6.90 m x 3.30 m 22'7" x 10'9"

Bedroom 1
5.00 m x 2.90 m 16'4" x 9'6"

Bedroom 2
3.70 m x 2.70 m 12'1" x 8'10"

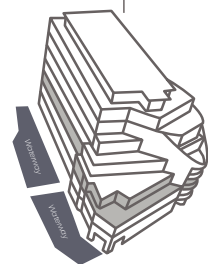
Balcony (Apartment 27)
2.99 m x 1.35 m 9'9" x 4'5"

Balcony (Apartment 33)
2.75 m x 1.85 m 9'0" x 6'11"

Total Internal Area
61.99 sq. mts. 667 sq. ft.

*Dashed outline shows Apartment 33

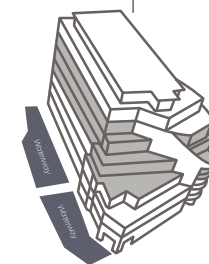
Tre Archi Apartments



Floor Locator Second Floor



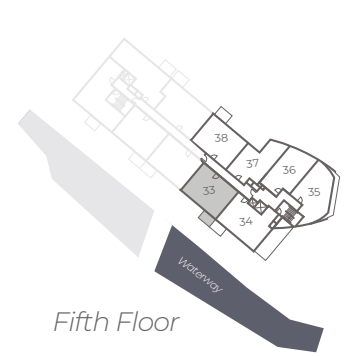
Tre Archi Apartments



Floor Locator Third Floor

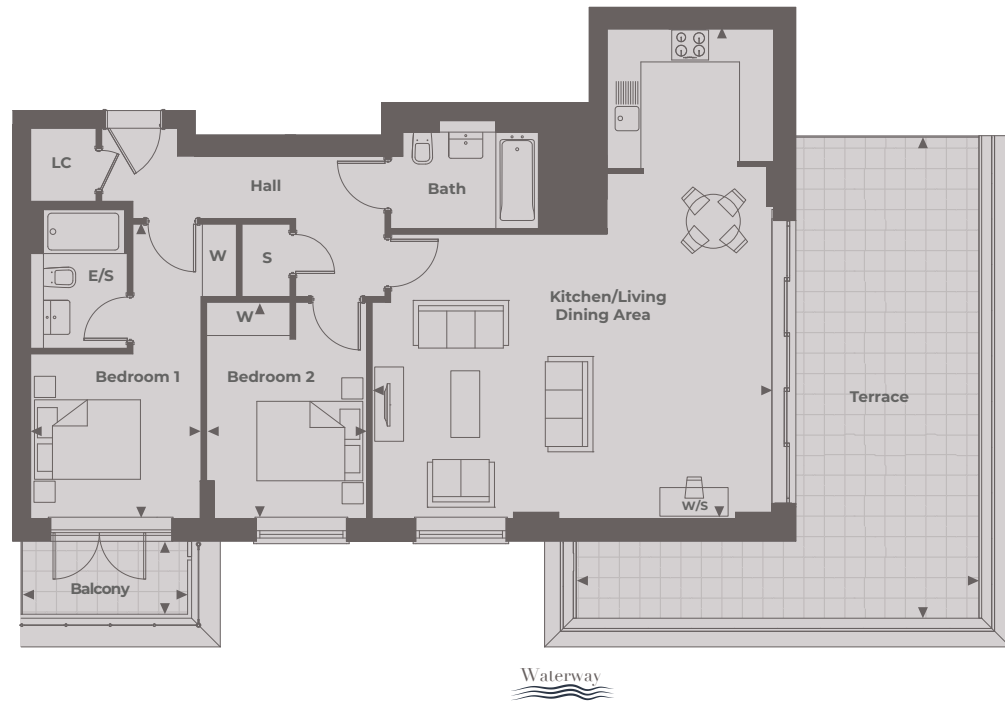


Fourth Floor



Fifth Floor

Point from which maximum dimensions are measured. Dimensions are intended for guidance only and may vary by plus or minus 7.6cm/3". The plots indicate general layout only which may vary from other apartments. Kitchen and bathroom layouts indicative only. W denotes wardrobe, LC - linen cupboard, C/O - concierge office, C/S - cycle storage, B/S - bins storage. Please contact sales consultant for more information.



APARTMENT 28

Two bedroom

Kitchen/Living/Dining Area
8.70 m x 7.10 m 28'6" x 23'3"

Bedroom 1
5.20 m x 3.00 m 17'0" x 9'10"

Bedroom 2
3.80 m x 2.80 m 12'5" x 9'2"

Terrace
8.45 m x 7.19 m 27'8" x 23'7"

Balcony
2.99 m x 1.35 m 9'9" x 4'5"

Total Internal Area
92.84 sq. mts. 999 sq. ft.



APARTMENT 29

Two bedroom

Kitchen/Living/Dining Area
6.90 m x 4.50 m 22'7" x 14'9"

Bedroom 1
5.40 m x 2.80 m 17'8" x 9'2"

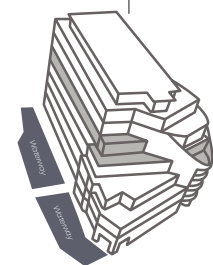
Bedroom 2
4.10 m x 3.80 m 13'5" x 12'5"

Terrace A
7.89 m x 3.88 m 25'11" x 12'9"

Terrace B
6.50 m x 3.27 m 21'4" x 10'9"

Total Internal Area
89.22 sq. mts. 960 sq. ft.

Tre Archi Apartments



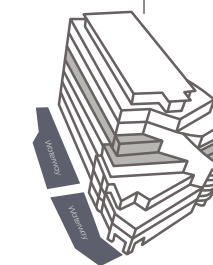
Floor Locator



Fourth Floor

Point from which maximum dimensions are measured. Dimensions are intended for guidance only and may vary by plus or minus 7.6cm/3". The plots indicate general layout only which may vary from other apartments. Kitchen and bathroom layouts indicative only. W denotes wardrobe, LC - linen cupboard, C/O - concierge office, C/S - cycle storage, B/S - bins storage. Please contact sales consultant for more information.

Tre Archi Apartments

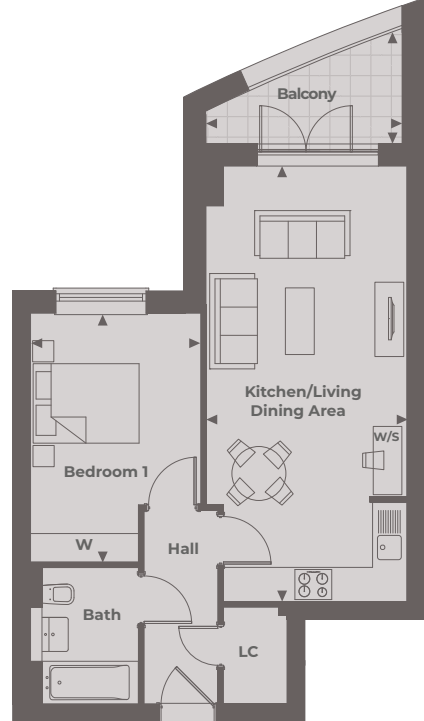


Floor Locator



Fourth Floor

Point from which maximum dimensions are measured. Dimensions are intended for guidance only and may vary by plus or minus 7.6cm/3". The plots indicate general layout only which may vary from other apartments. Kitchen and bathroom layouts indicative only. W denotes wardrobe, LC - linen cupboard, C/O - concierge office, C/S - cycle storage, B/S - bins storage. Please contact sales consultant for more information.



◀ **APARTMENT 31**

One bedroom

Kitchen/Living/Dining Area
7.70 m x 3.50 m 25'3" x 11'5"

Bedroom 1
4.40 m x 3.00 m 14'5" x 9'10"

Balcony
3.46 m x 2.01 m 11'4" x 6'7"

Total Internal Area
51.14 sq. mts. 550 sq. ft.

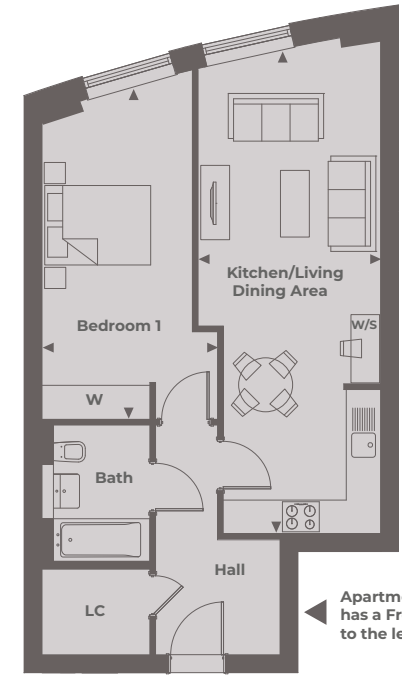
APARTMENTS 30, 36 ▶

One bedroom

Kitchen/Living/Dining Area
8.50 m x 3.20 m 27'11" x 10'5"

Bedroom 1
5.90 m x 3.00 m 19'4" x 9'10"

Total Internal Area
58.26 sq. mts. 627 sq. ft.



◀ Apartment 36 has a Front Door to the left

APARTMENTS 32, 38 ▶

Two bedroom

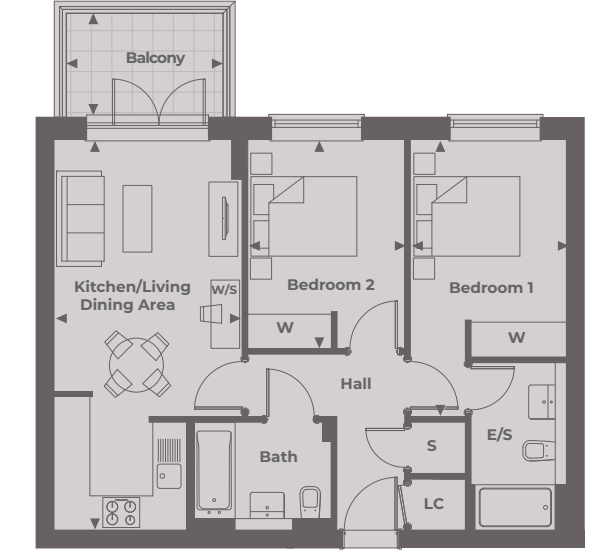
Kitchen/Living/Dining Area
6.90 m x 3.30 m 22'7" x 10'9"

Bedroom 1
4.90 m x 2.80 m 16'0" x 9'2"

Bedroom 2
3.80 m x 2.80 m 12'5" x 9'2"

Balcony
2.75 m x 1.85 m 9'0" x 6'1"

Total Internal Area
62.23 sq. mts. 670 sq. ft.



◀ **APARTMENT 34**

Two bedroom

Kitchen/Living/Dining Area
5.20 m x 4.20 m 17'0" x 13'9"

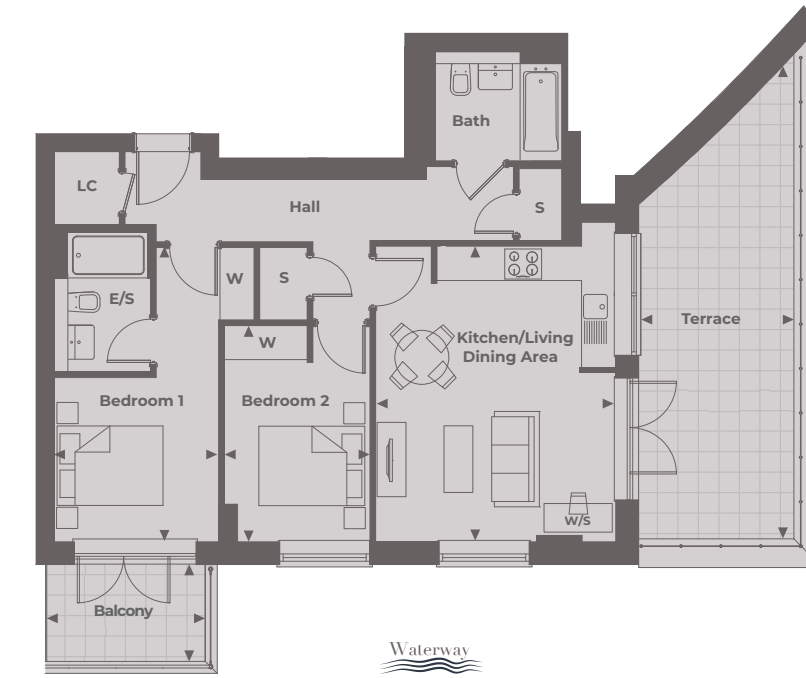
Bedroom 1
5.20 m x 2.90 m 17'0" x 9'6"

Bedroom 2
3.80 m x 2.60 m 12'5" x 8'6"

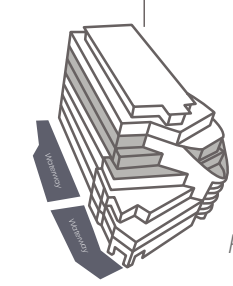
Terrace
8.56 m x 2.73 m 28'1" x 8'11"

Balcony
2.80 m x 1.70 m 9'2" x 5'7"

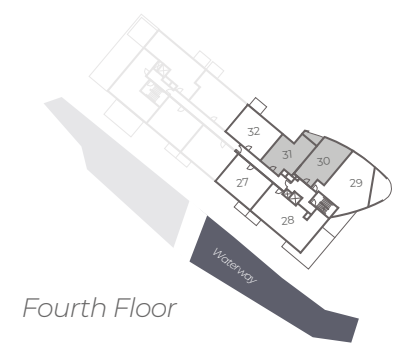
Total Internal Area
70.06 sq. mts. 754 sq. ft.



Tre Archi Apartments



Floor Locator



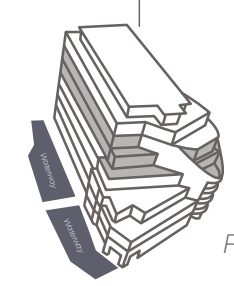
Fourth Floor



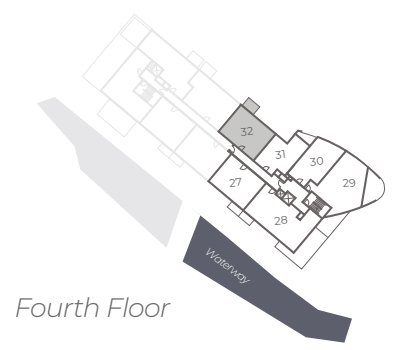
Fifth Floor

◀ Point from which maximum dimensions are measured. Dimensions are intended for guidance only and may vary by plus or minus 7.6cm/3". The plots indicate general layout only which may vary from other apartments. Kitchen and bathroom layouts indicative only. W denotes wardrobe. LC - linen cupboard. C/O - concierge office. C/S - cycle storage. B/S - bins storage. Please contact sales consultant for more information.

Tre Archi Apartments



Floor Locator



Fourth Floor



Fifth Floor

◀ Point from which maximum dimensions are measured. Dimensions are intended for guidance only and may vary by plus or minus 7.6cm/3". The plots indicate general layout only which may vary from other apartments. Kitchen and bathroom layouts indicative only. W denotes wardrobe. LC - linen cupboard. C/O - concierge office. C/S - cycle storage. B/S - bins storage. Please contact sales consultant for more information.

APARTMENT 35 ▶

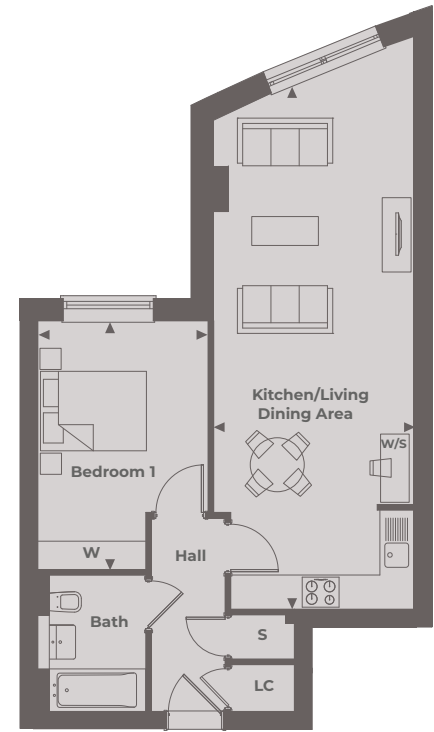
One bedroom

Kitchen/Living/Dining Area
10.00 m x 5.10 m 32'9" x 16'8"

Bedroom 1
5.50 m x 3.00 m 18'0" x 9'10"

Terrace
8.10 m x 0.90 m 26'7" x 2'11"

Total Internal Area
67.53 sq. mts. 727 sq. ft.



APARTMENT 37 ◀

One bedroom

Kitchen/Living/Dining Area
9.30 m x 3.50 m 30'6" x 11'5"

Bedroom 1
4.40 m x 3.00 m 14'5" x 9'10"

Total Internal Area
57.31 sq. mts. 617 sq. ft.

APARTMENT 39 ▶

Two bedroom

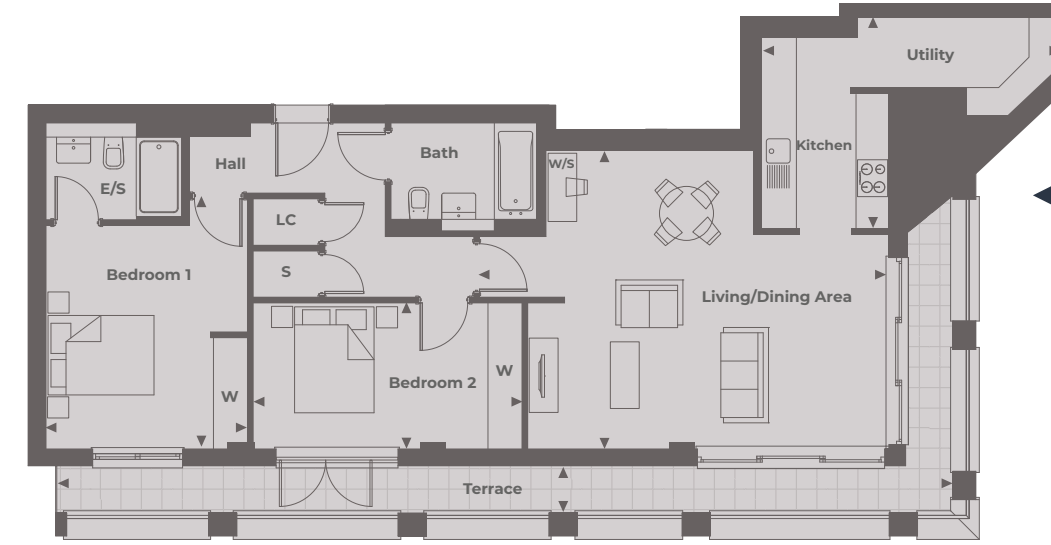
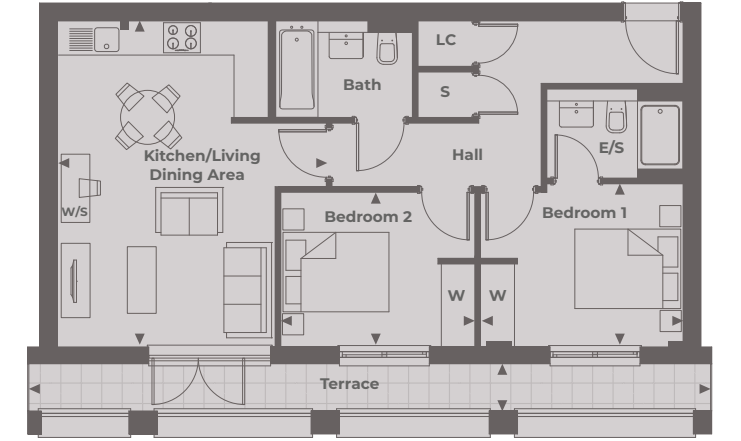
Kitchen/Living/Dining Area
5.70 m x 4.70 m 18'8" x 15'5"

Bedroom 1
3.60 m x 2.90 m 11'9" x 9'6"

Bedroom 2
3.40 m x 2.70 m 11'1" x 8'10"

Terrace
11.94 m x 0.85 m 39'2" x 2'9"

Total Internal Area
63.56 sq. mts. 684 sq. ft.



APARTMENT 40 ◀

Two bedroom

Living/Dining Area
7.20 m x 5.28 m 23'7" x 17'4"

Kitchen/Utility
5.26 m x 3.75 m 17'3" x 12'4"

Bedroom 1
4.40 m x 3.60 m 14'5" x 11'9"

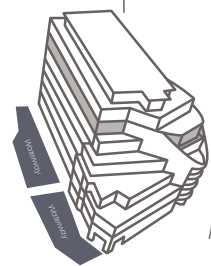
Bedroom 2
4.70 m x 2.60 m 15'5" x 8'6"

Terrace
15.71 m x 0.85 m 51'7" x 2'9"

Total Internal Area
91.71 sq. mts. 987 sq. ft.



Tre Archi Apartments

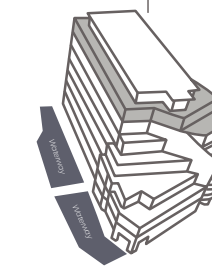


Floor Locator

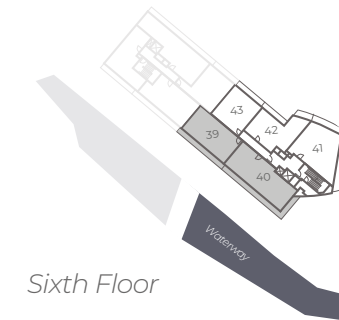


Fifth Floor

Tre Archi Apartments



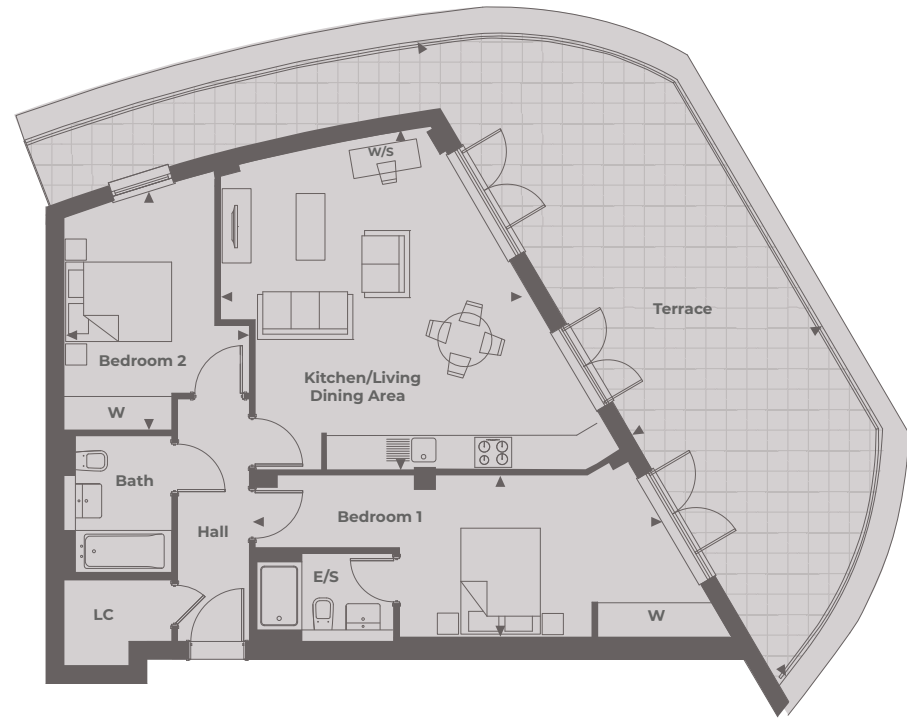
Floor Locator



Sixth Floor

◀ Point from which maximum dimensions are measured. Dimensions are intended for guidance only and may vary by plus or minus 7.6cm/3". The plots indicate general layout only which may vary from other apartments. Kitchen and bathroom layouts indicative only. W denotes wardrobe. LC - linen cupboard. C/O - concierge office. C/S - cycle storage. B/S - bins storage. Please contact sales consultant for more information.

◀ Point from which maximum dimensions are measured. Dimensions are intended for guidance only and may vary by plus or minus 7.6cm/3". The plots indicate general layout only which may vary from other apartments. Kitchen and bathroom layouts indicative only. W denotes wardrobe. LC - linen cupboard. C/O - concierge office. C/S - cycle storage. B/S - bins storage. Please contact sales consultant for more information.



APARTMENT 41

Two bedroom

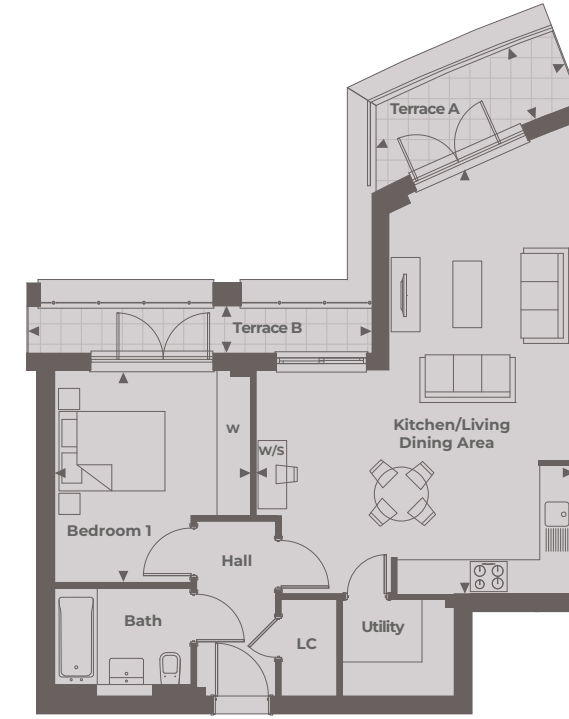
Kitchen/Living/Dining Area
6.00 m x 5.60 m 19'8" x 18'4"

Bedroom 1
7.10 m x 2.90 m 23'3" x 9'6"

Bedroom 2
4.20 m x 3.30 m 13'9" x 10'9"

Terrace
12.80 m x 3.86 m 42'0" x 12'8"

Total Internal Area
78.87 sq. mts. 849 sq. ft.



APARTMENT 42

One bedroom

Kitchen/Living/Dining Area
7.70 m x 5.60 m 25'3" x 18'4"

Bedroom 1
3.80 m x 3.50 m 12'5" x 11'5"

Terrace A
3.77 m x 1.10 m 12'5" x 3'7"

Terrace B
6.03 m x 0.85 m 19'9" x 2'9"

Total Internal Area
61.51 sq. mts. 662 sq. ft.

APARTMENT 43

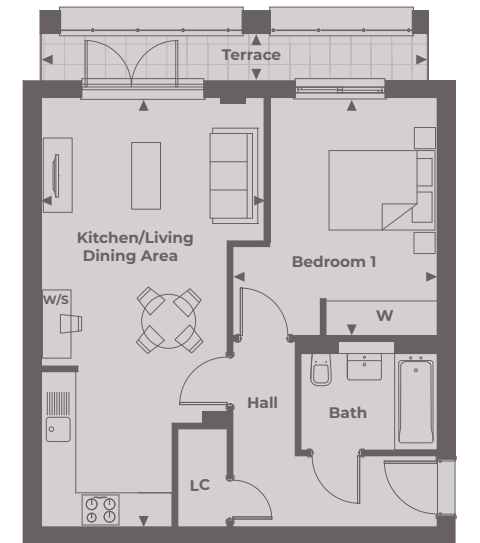
One bedroom

Kitchen/Living/Dining Area
7.60 m x 3.90 m 24'11" x 12'9"

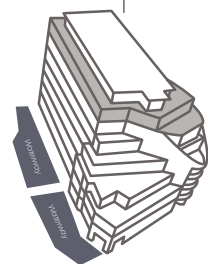
Bedroom 1
4.20 m x 3.60 m 13'9" x 11'9"

Terrace
6.78 m x 0.85 m 22'3" x 2'9"

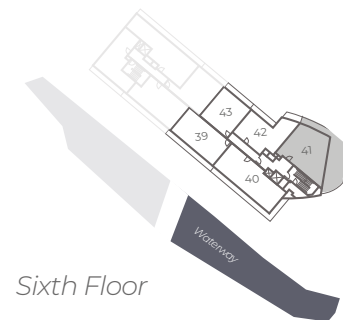
Total Internal Area
53.05 sq. mts. 571 sq. ft.



Tre Archi Apartments



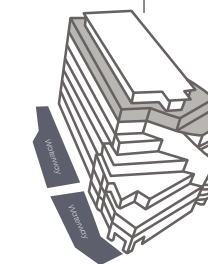
Floor Locator



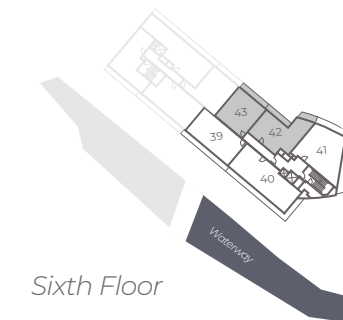
Sixth Floor

Point from which maximum dimensions are measured. Dimensions are intended for guidance only and may vary by plus or minus 7.6cm/3". The plots indicate general layout only which may vary from other apartments. Kitchen and bathroom layouts indicative only. W denotes wardrobe, LC - linen cupboard, C/O - concierge office, C/S - cycle storage, B/S - bins storage. Please contact sales consultant for more information.

Tre Archi Apartments



Floor Locator



Sixth Floor

Point from which maximum dimensions are measured. Dimensions are intended for guidance only and may vary by plus or minus 7.6cm/3". The plots indicate general layout only which may vary from other apartments. Kitchen and bathroom layouts indicative only. W denotes wardrobe, LC - linen cupboard, C/O - concierge office, C/S - cycle storage, B/S - bins storage. Please contact sales consultant for more information.

APARTMENT 44 ▶

Two bedroom

Living/Dining Area
6.55 m x 5.80 m 21'6" x 19'0"

Kitchen
5.36 m x 2.47 m 17'7" x 8'1"

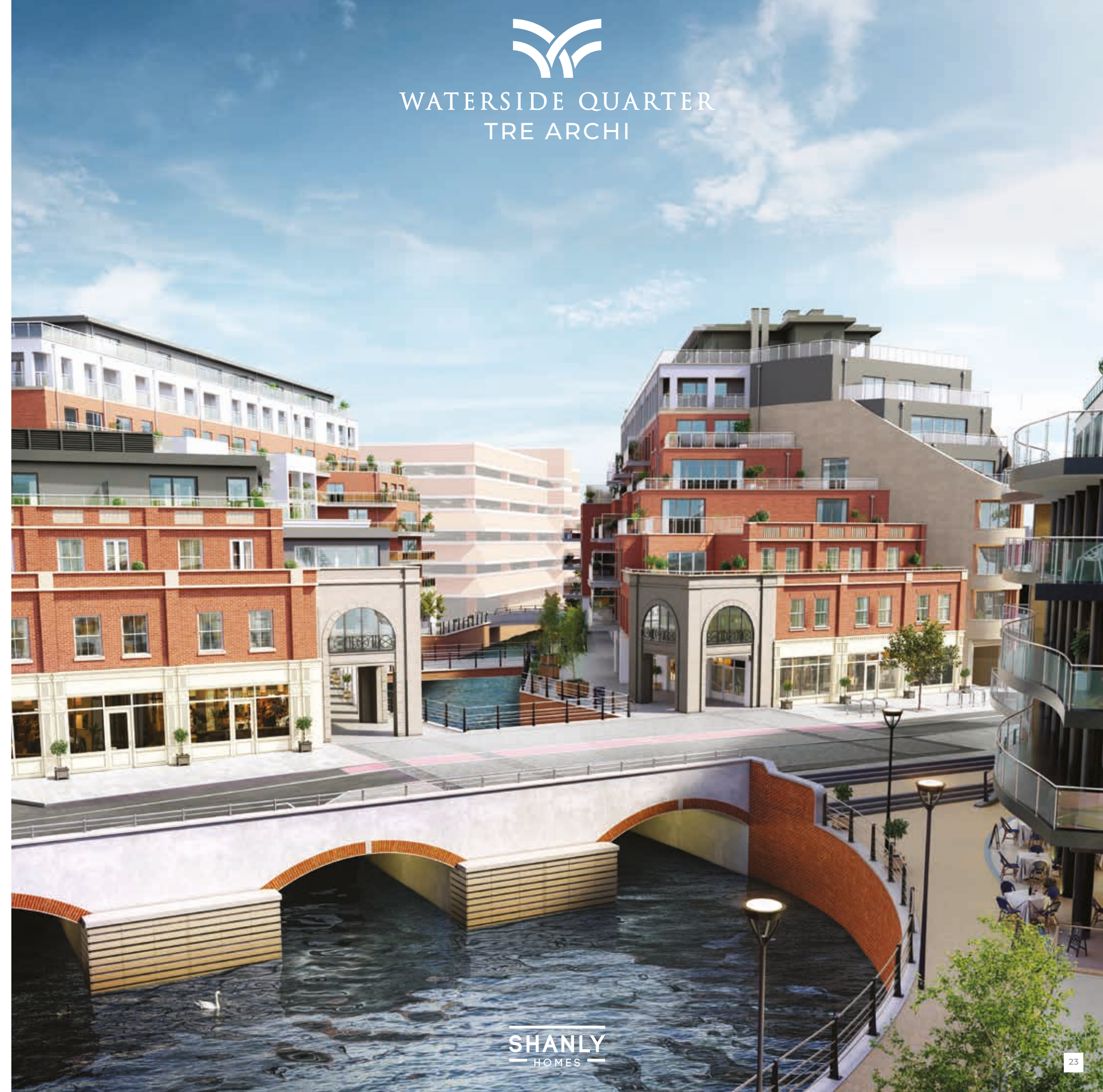
Bedroom 1
5.80 m x 3.80 m 19'0" x 12'5"

Bedroom 2
4.60 m x 4.10 m 15'1" x 13'5"

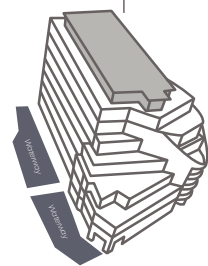
Terrace A
17.35 m x 8.86 m 56'11" x 29'1"

Terrace B
13.95 m x 3.52 m 45'9" x 11'6"

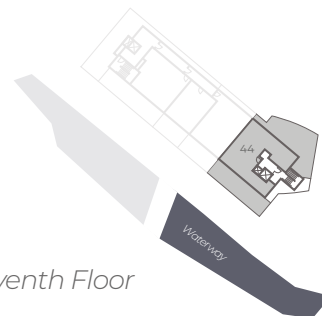
Total Internal Area
101.51 sq. mts. 1093 sq. ft.



Tre Archi Apartments



Floor Locator Seventh Floor



◀ Point from which maximum dimensions are measured. Dimensions are intended for guidance only and may vary by plus or minus 7.6cm/3". The plots indicate general layout only which may vary from other apartments. Kitchen and bathroom layouts indicative only. W denotes wardrobe, LC - linen cupboard, C/O - concierge office, C/S - cycle storage, B/S - bins storage. Please contact sales consultant for more information.

Superior design and style

The Tre Archi Apartments have been specifically designed to create a peaceful and relaxing environment to call home.

From bright, open-plan living areas, to sleek interior finishes, these apartments offer an unrivalled luxurious lifestyle. Superior design touches include built-in wardrobes, smart en-suites, spacious balconies and terraces with panoramic views, car charging points and underground gated parking.



Shanly Homes is a registered developer with the NHQB.

Kitchen

- Porter Matt with contemporary woodgrain panelled kitchen units complemented by composite stone work surfaces and upstands
- Soft close handleless drawers
- Stainless steel underslung single bowl sink
- Chrome mixer tap
- A range of energy efficient appliances offering quality and style:
 - Integrated stainless steel oven
 - Induction hob
 - Integrated microwave
 - Integrated fridge/freezer
 - Integrated dishwasher
 - Integrated washer/dryer



Bathroom and En-suites

- Contemporary white sanitaryware
- Mixer taps and shower control
- Duel fuel heated chrome towel rails
- Stylish tiled bathroom
- Two drawer vanity unit to bathroom
- Mirrored wall cabinet to en-suite

Interior

- 5 panel doors with a painted finish
- Polished chrome door furniture
- Double glazed windows with security locking
- Sliding wardrobes to bedroom 1 and bedroom 2 (if applicable – see floorplans)
- Multimedia plate with Sky Q point and TV point in living room. Master bedroom with TV point (Subscription required for Sky)
- LED downlights to kitchen area, bathrooms, en-suites and hall
- Underfloor heating throughout the apartment
- BT Full Fibre broadband connection* with speeds up to 900MB

Exterior

- Beautifully designed soft and hard landscaping
- Private underground gated parking
- Covered cycle store
- External lighting
- EV car charging points
- Green roof

Other

- Concierge
- Centralised heating and hot water system for energy efficiency
- The apartments at Waterside Quarter are of concrete frame with steel frame infill

*Purchaser subscription required.





SHANLY
— HOMES —

shanlyhomes.com