



LIGHTFIELD

HIGH ST. BARNET. LONDON

THE APARTMENTS

—
SHANLY
— HOMES —



LIGHTFIELD

HIGH ST. BARNET

SEE BARNET IN A NEW LIGHT

DISCOVER YOUR ENVIABLE LIFESTYLE
AT LIGHTFIELD IN THIS GREENEST
OF BOROUGHES, WITH EVERYTHING
YOU WANT CLOSE BY, YET JUST
30 MINUTES FROM THE CITY.



This exclusive collection of apartments, set behind an elegant gated entrance, are perfectly located in the heart of Barnet Town Centre. These contemporary homes offer excellent access to the restaurants and leisure facilities close by as well as being just 12 minute walk from High Barnet underground station.

SHANLY
HOMES

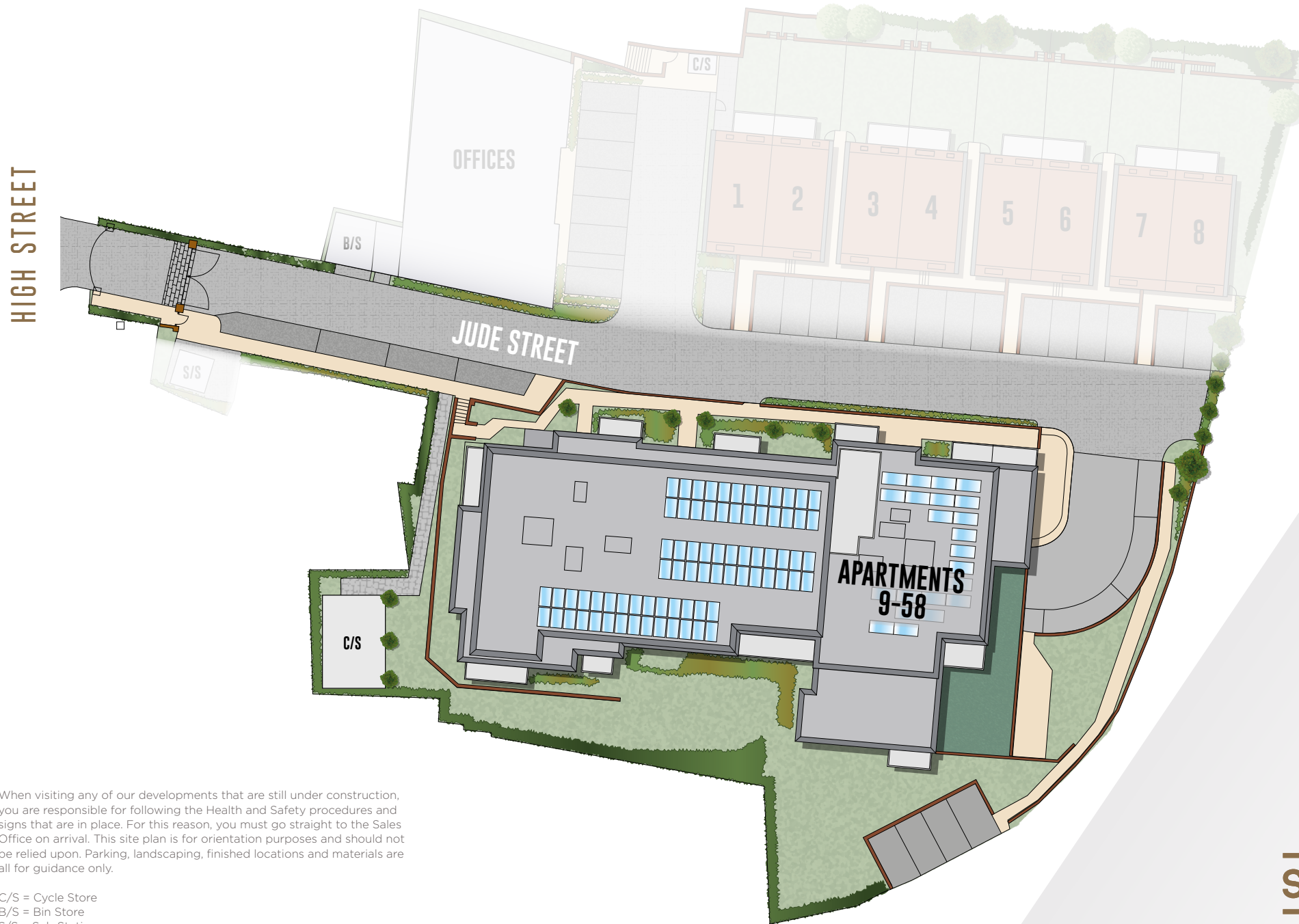
CONTEMPORARY MEWS APARTMENTS



THE SITE PLAN



LIGHTFIELD



When visiting any of our developments that are still under construction, you are responsible for following the Health and Safety procedures and signs that are in place. For this reason, you must go straight to the Sales Office on arrival. This site plan is for orientation purposes and should not be relied upon. Parking, landscaping, finished locations and materials are all for guidance only.

C/S = Cycle Store
B/S = Bin Store
S/S = Sub Station

A BRIGHTER BARNET IN THE MAKING

ENJOY YOUR PRECIOUS LEISURE TIME EATING, DRINKING AND SHOPPING IN BARNET'S COLOURFUL ARRAY OF RESTAURANTS, CAFÉS AND SHOPS IN THIS LIVELY BOROUGH.



The Spires shopping centre is under a two minute walk from Lightfield and here you'll find a Waitrose and Partners, Waterstone's bookshop and a host of stores. The centre is also home to regular food markets, including a vegan market. When you want a little pampering, try the Orchid Retreat day spa. The High Street has a butcher's, baker's, patisserie and shops, including the chic Room 89 lifestyle boutique.



Indulge in retail therapy or dine in style: a warm welcome awaits in this thriving community. Whether you want a coffee break while shopping, an indulgent dinner or a trip to Lewis of London Ice Cream Farm, you'll find plenty to tempt your taste buds.



Visit a traditional pub, sip cocktails at a bar or have lunch at the Hadley House or Melange restaurant. At The Black Horse you can enjoy live music, delicious food or try the secret gin garden. The pub is also home to a microbrewery, Barnet Brewery.



LIGHTFIELD



BARNET'S PARKS, RECREATION GROUNDS, NATURE SITES AND LEISURE FACILITIES ARE THE JEWELS IN ITS CROWN. WHETHER YOU WANT TO ENJOY AN IMPROMPTU PICNIC OR GET ON YOUR BIKE AND FOLLOW ONE OF THE MANY TRAILS, YOU'LL BE SPOILED FOR WAYS TO RELAX.

You won't have to travel far to find entertainment as Barnet has a colourful array of attractions and events. Highlights include the Summer Soulstice music festival and the two-day Barnet Medieval Festival. For a family day out take the Go Ape Treetop Challenge, tackle the Tudor Park Footgolf Course or visit Malibus Soft Play. Culture lovers can visit Barnet Museum and learn about the Battle of Barnet, take in a show at The Bull Theatre, or a film at the Everyman cinema. Playing fields and children's play areas include the Old Courthouse Recreation Ground, which is a short walk away.



Leading a healthy lifestyle is easy thanks to the abundance of green spaces to walk, cycle or run and the excellent sports facilities. Less than 10 minutes' walk away is King George's Fields, 28 hectares of park and open space. There are well equipped gyms close by and fitness studios, including at New Barnet Leisure Centre, which also has a swimming pool. The area has several clubs for all ages, including those for running, boxing, tennis, climbing and golf enthusiasts.





THE BRIGHT LIGHTS OF THE CAPITAL IN MINUTES

THE WORLD'S MOST VIBRANT CITY, WITH ITS ENDLESS POSSIBILITIES, IS ON YOUR DOORSTEP AND EASILY ACCESSIBLE BY TRAIN, TUBE OR CAR.

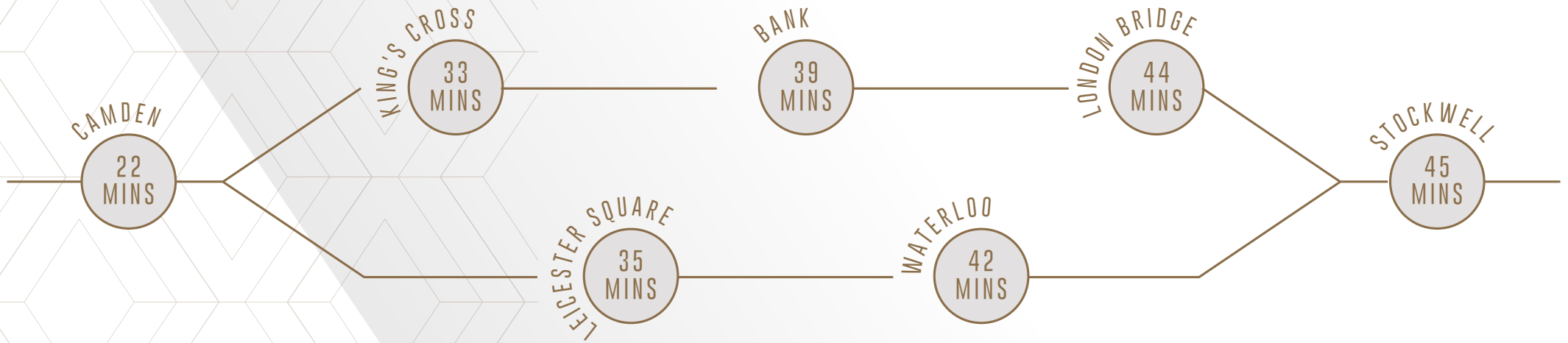


Make unforgettable family memories on a trip to the Natural History Museum, Madame Tussaud's or the Sea Life London Aquarium. See your favourite team or band, or simply enjoy shopping; with so many world famous attractions within easy reach, you can try something new every weekend.

Epic adventures and life-changing experiences await in Central London, with its unrivalled history, culture and top-class music and sports venues. What could be better than taking in a West End show, tucking into some delicious food and then enjoying the views from the London Eye?



HIGH BARNET - ON POLE POSITION FOR THE NORTHERN LINE



Travelling into the capital for work or pleasure couldn't be simpler, with High Barnet Underground Station just a 12-minute walk away. Frequent Northern Line trains connect you to King's Cross and St Pancras International in a little over half an hour and open up connections across London.



New Barnet Overground Station is less than two miles from Lightfield and from here you can be in Moorgate in 32 minutes or Welwyn Garden City in 19 minutes. Road links to the M25, M1 and A1 give excellent access to Central London and the North.



INTRODUCING YOUR NEW APARTMENT



PREPARE TO BE IMPRESSED BY THE BEAUTIFUL CONTEMPORARY DESIGN OF YOUR NEW HOME AND THE SUPERIOR FINISHES IN EVERY ROOM.

Boasting stylish and practical layouts to maximise space and comfort, a stunning apartment at Lightfield is somewhere you'll be proud to call home. The apartments benefit from a lift and all two bedroom and selected one bedroom apartments offer a parking space, some of which are located under the block with direct lift access.

Showcasing clever design touches throughout, these homes also feature the superb specification you would expect from award-winning Shanly Homes.



Show home photograph from previous Shanly Homes show home.

The welcoming hallway gives your apartment a feeling of space and leads to the kitchen/dining/living area which will be the hub of your home. Enjoy preparing meals for friends in your kitchen with its Siemens and Zanussi appliances, including an oven, gas hob, integrated combi microwave oven, fridge/freezer, dishwasher and washer/dryer. A one bedroom apartment boasts modern open-plan living. A two bedroom apartment is ideal if you need more space, or if you want an extra room to work from home. All of these apartments also benefit from underfloor heating and many have a generous balcony/patio which adds on extra space for entertaining.

APARTMENT 9
ONE BEDROOM

Kitchen/Living/Dining Area
6.30m x 4.00m 20'7" x 13'1"

Bedroom
4.00m x 3.12m 13'1" x 10'2"

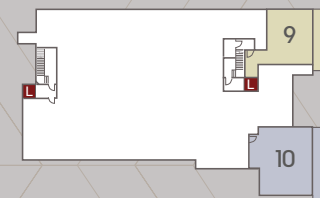
Patio
9.63m x 2.60m 31'6" x 8'5"

Internal Area
57.3 sq m 616 sq ft

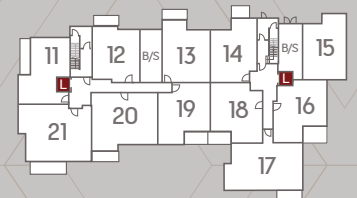


◀ Point from which maximum dimensions are measured. Dimensions are intended for guidance only and may vary by plus or minus 7.6cm/3". The plots indicate general layout only which may vary from other plots. Kitchen and bathroom layouts indicative only. W denotes wardrobe. S denotes storage. E/S denotes en-suite. W/S denotes workstation. L denotes lift. Please contact sales consultant for more information.

12



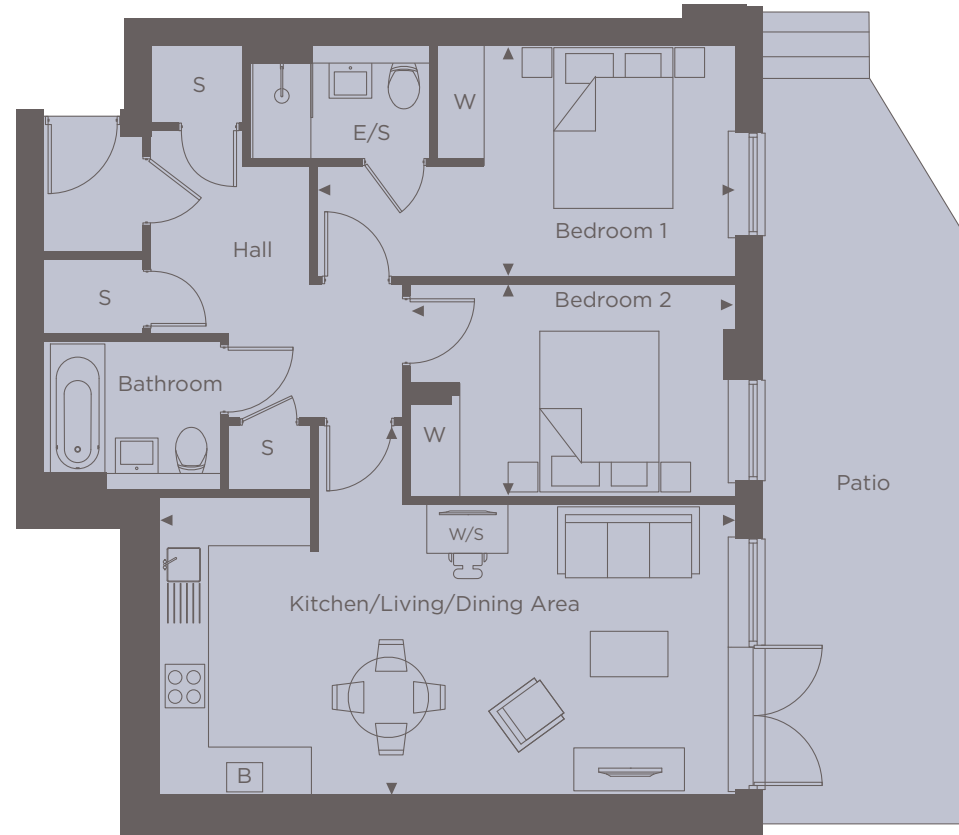
LOWER GROUND FLOOR



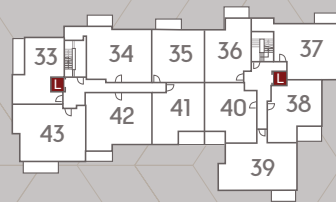
GROUND FLOOR

APARTMENT 10
TWO BEDROOM

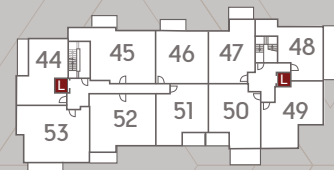
Kitchen/Living/Dining Area	
7.50m x 3.80m	24'6" x 11'8"
Bedroom 1	
5.40m x 3.00m	17'7" x 9'8"
Bedroom 2	
4.20m x 2.80m	13'8" x 9'2"
Patio	
10.50m x 2.70m	34'4" x 8'6"
Internal Area	
76.8 sq m	827 sq ft



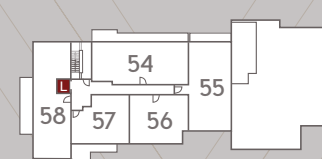
FIRST FLOOR



SECOND FLOOR



THIRD FLOOR



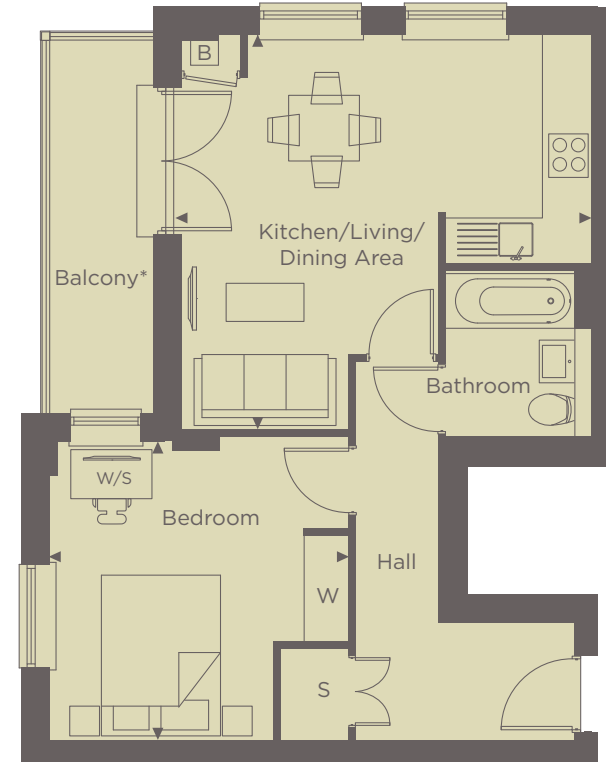
FOURTH FLOOR

APARTMENT 11, 22, 33 & 44

ONE BEDROOM

Kitchen/Living/Dining Area	
5.40m x 5.20m	17'7" x 17'1"
Bedroom	
4.00m x 3.90m	13'1" x 12'8"
Balcony	
5.07m x 1.50m	16'6" x 4'9"
Internal Area	
51.6 sq m	555 sq ft

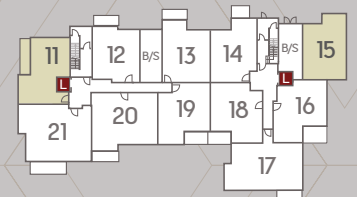
* Patio to plot 11



◀ Point from which maximum dimensions are measured. Dimensions are intended for guidance only and may vary by plus or minus 7.6cm/3". The plots indicate general layout only which may vary from other plots. Kitchen and bathroom layouts indicative only. W denotes wardrobe. S denotes storage. E/S denotes en-suite. W/S denotes workstation. L denotes lift. Please contact sales consultant for more information.



LOWER GROUND FLOOR



GROUND FLOOR

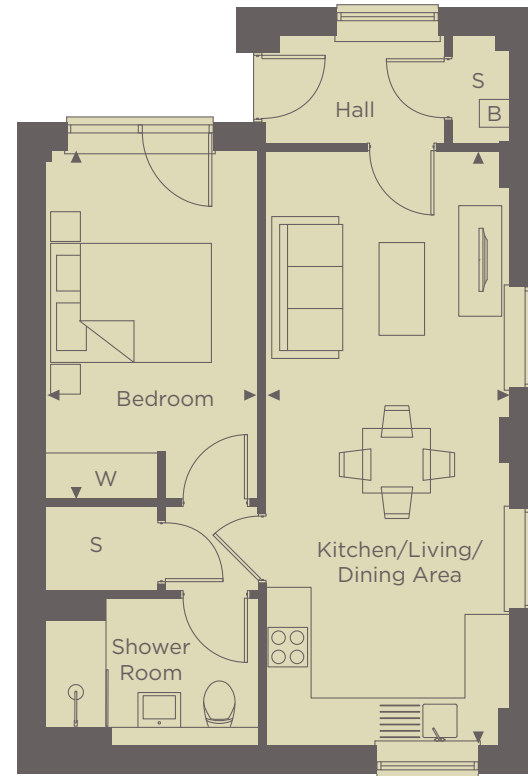
APARTMENT 15

ONE BEDROOM

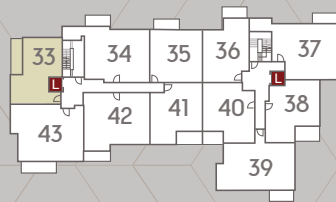
Kitchen/Living/Dining Area
7.80m x 3.20m 25'6" x 10'6"

Bedroom
4.60m x 2.80m 15'1" x 9'2"

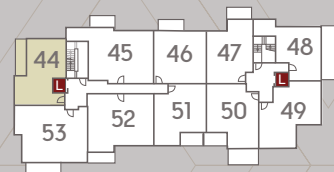
Internal Area
52.60 sq m 566.18 sq ft



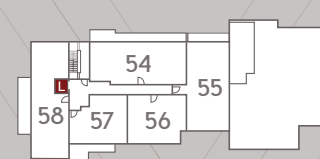
FIRST FLOOR



SECOND FLOOR



THIRD FLOOR



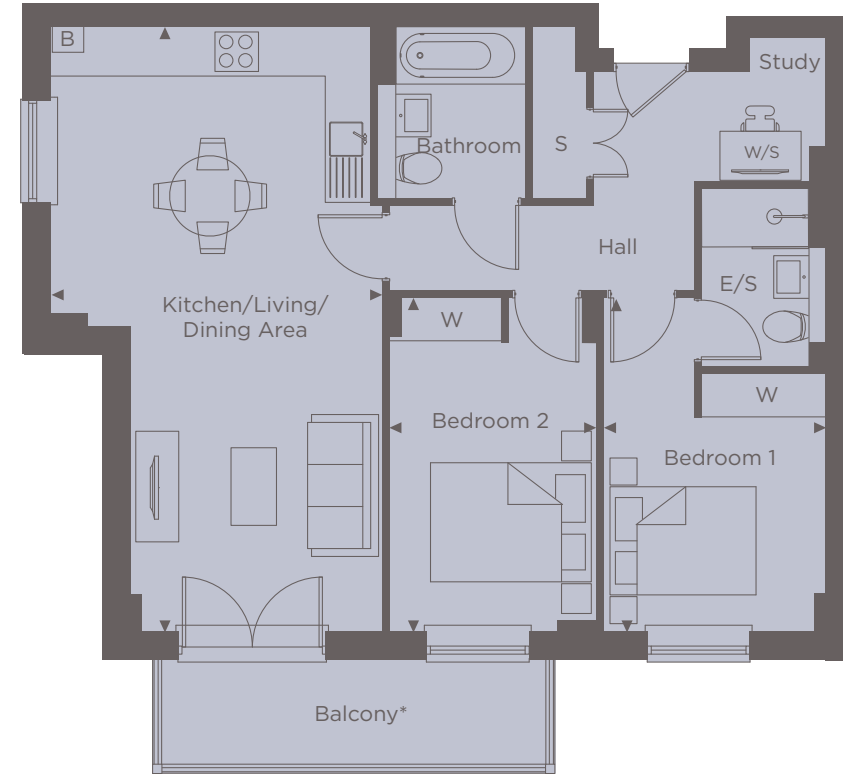
FOURTH FLOOR

APARTMENT 21, 32, 43 & 53

TWO BEDROOM

Kitchen/Living/Dining Area	8.00m x 4.40m	26'2" x 14'4"
Bedroom 1	4.40m x 2.90m	14'4" x 9'5"
Bedroom 2	4.40m x 2.80m	14'4" x 9'2"
Balcony	5.32m x 1.50m	17'5" x 4'9"
Internal Area	75.7 sq m	814 sq ft

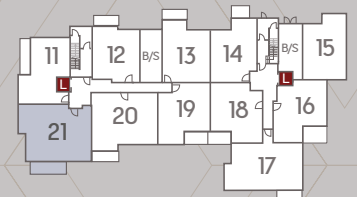
* Patio to plot 21



◀ Point from which maximum dimensions are measured. Dimensions are intended for guidance only and may vary by plus or minus 7.6cm/3". The plots indicate general layout only which may vary from other plots. Kitchen and bathroom layouts indicative only. W denotes wardrobe. S denotes storage. E/S denotes en-suite. W/S denotes workstation. L denotes lift. Please contact sales consultant for more information.



LOWER GROUND FLOOR

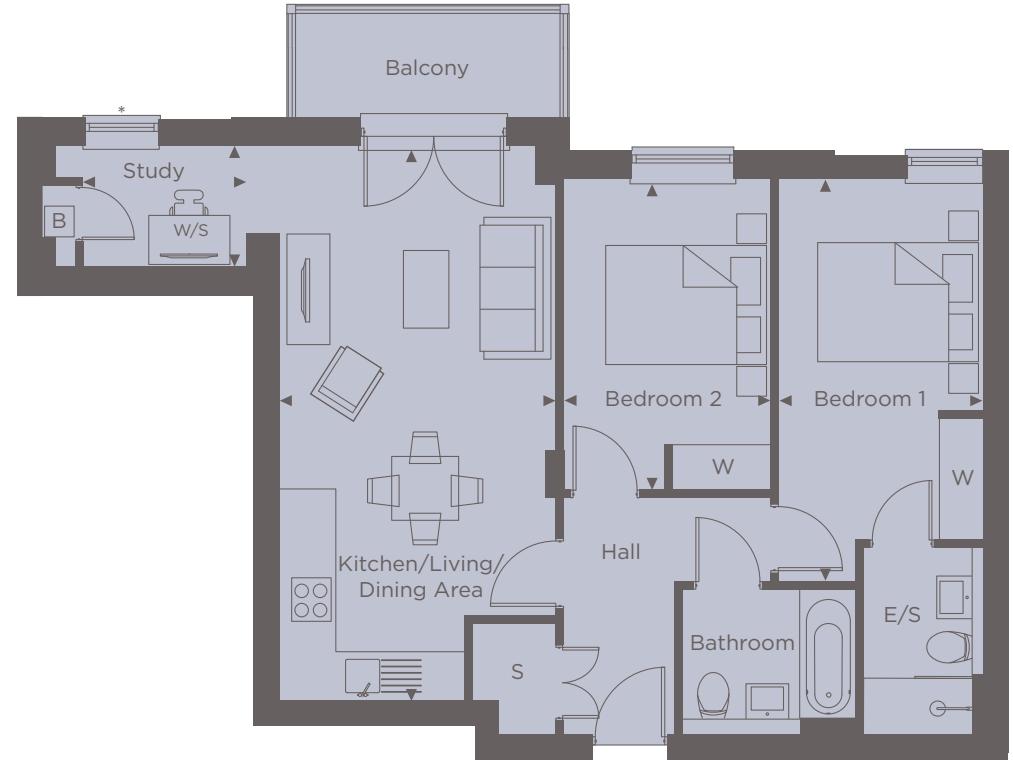


GROUND FLOOR

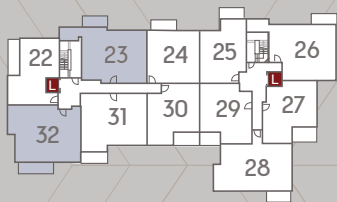
APARTMENT 23, 34 & 45

TWO BEDROOM

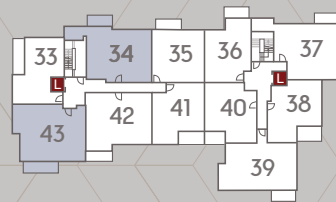
- Kitchen/Living/Dining Area**
7.30m x 3.50m 27'2" x 11'9"
- Bedroom 1**
5.30m x 2.80m 20'8" x 9'2"
- Bedroom 2**
4.10m x 2.80m 16'0" x 8'6"
- Balcony**
3.53m x 1.40m 10'10" x 4'6"
- Internal Area**
72.2 sq m 777 sq ft



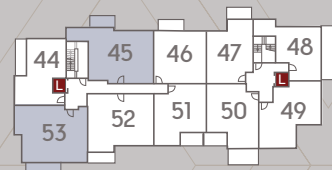
* Window arrangement to plots 23 and 45



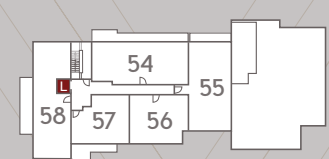
FIRST FLOOR



SECOND FLOOR



THIRD FLOOR



FOURTH FLOOR

APARTMENT 24, 35 & 46

ONE BEDROOM

Kitchen/Living/Dining Area
6.03m x 4.06m 19'9" x 13'3"

Bedroom
4.85m x 3.13m 15'10" x 10'3"

Balcony
3.65m x 1.30m 11'10" x 4'2"

Internal Area
53.1 sq m 571 sq ft

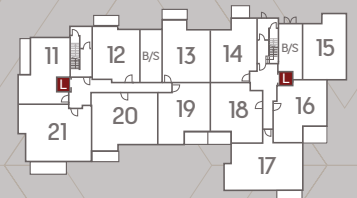
* Window arrangement to plots 24 and 46



◀ Point from which maximum dimensions are measured. Dimensions are intended for guidance only and may vary by plus or minus 7.6cm/3". The plots indicate general layout only which may vary from other plots. Kitchen and bathroom layouts indicative only. W denotes wardrobe. S denotes storage. E/S denotes en-suite. W/S denotes workstation. L denotes lift. Please contact sales consultant for more information.



LOWER GROUND FLOOR



GROUND FLOOR

APARTMENT 25, 36 & 47

ONE BEDROOM

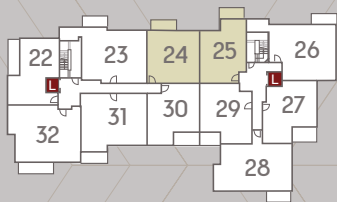
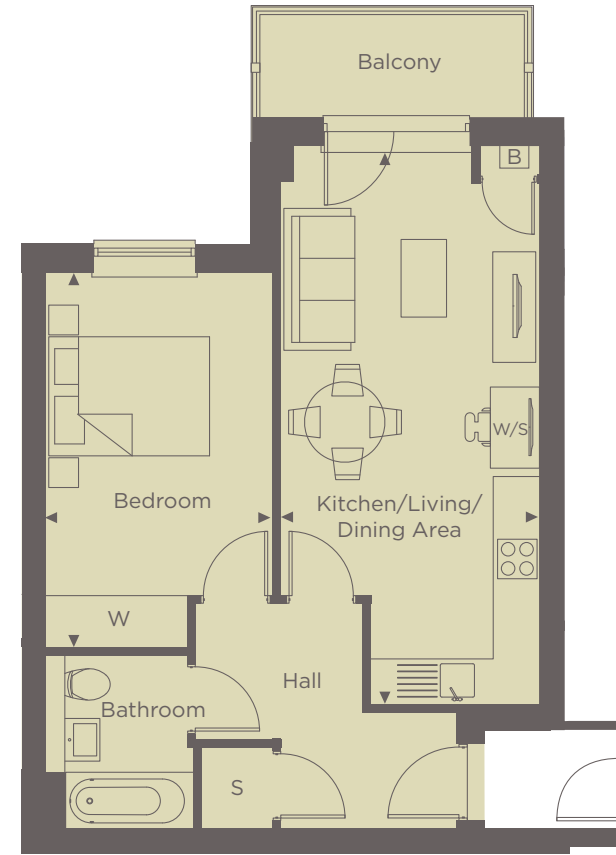
Kitchen/Living/Dining Area
7.40m x 3.40m 24'3" x 11'2"

Bedroom
4.90m x 3.00m 16'1" x 9'8"

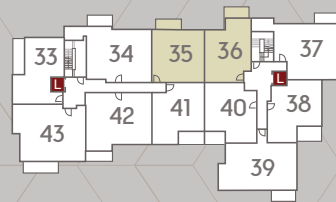
Balcony
3.35m x 1.40m 10'10" x 4'6"

Internal Area
51.3 sq m 552 sq ft

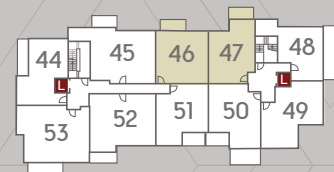
Apartment 47 Internal Area
51.9 sq m 558 sq ft



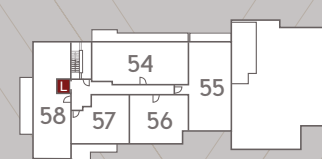
FIRST FLOOR



SECOND FLOOR



THIRD FLOOR

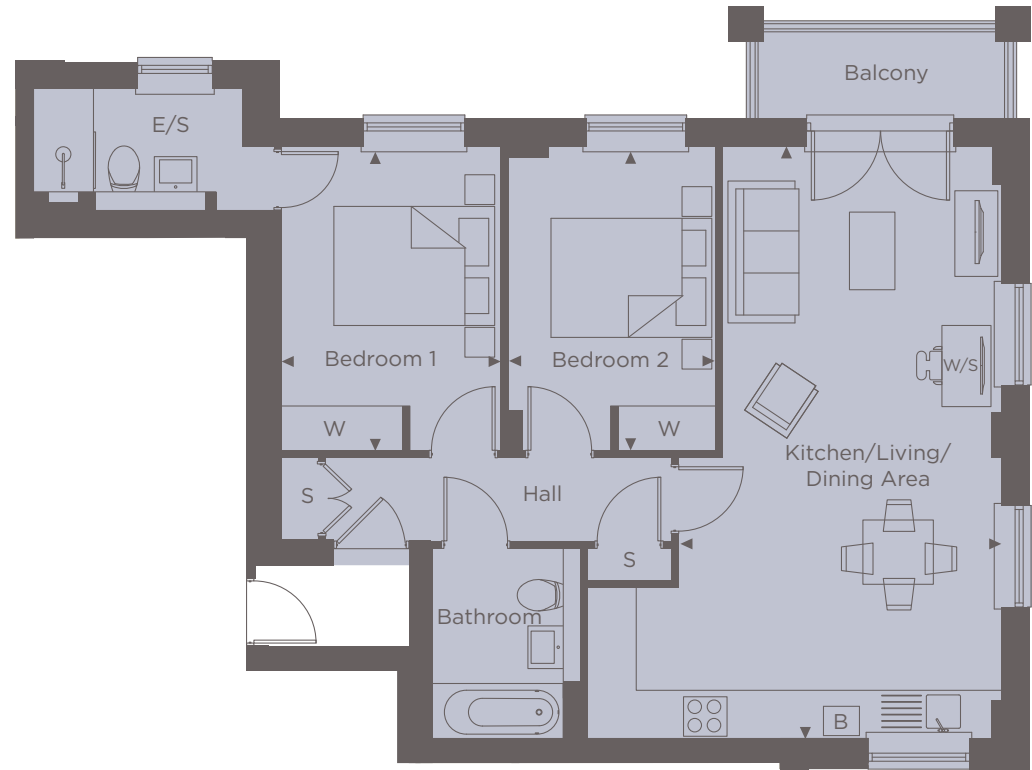


FOURTH FLOOR

APARTMENT 26 & 37

TWO BEDROOM

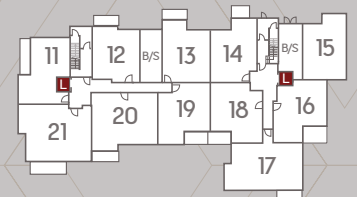
Kitchen/Living/Dining Area	
7.80m x 4.29m	25'6" x 14'1"
Bedroom 1	
4.00m x 2.90m	13'1" x 9'5"
Bedroom 2	
4.00m x 2.80m	13'1" x 9'2"
Balcony	
3.65m x 1.30m	11'10" x 4'2"
Internal Area	
73 sq m	785 sq ft



◀ Point from which maximum dimensions are measured. Dimensions are intended for guidance only and may vary by plus or minus 7.6cm/3". The plots indicate general layout only which may vary from other plots. Kitchen and bathroom layouts indicative only. W denotes wardrobe. S denotes storage. E/S denotes en-suite. W/S denotes workstation. L denotes lift. Please contact sales consultant for more information.



LOWER GROUND FLOOR



GROUND FLOOR

APARTMENT 27 & 38

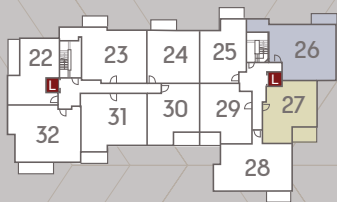
ONE BEDROOM

Kitchen/Living/Dining Area
6.40m x 3.50m 20'1" x 11'5"

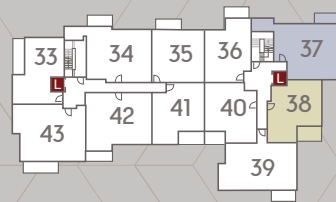
Bedroom
3.90m x 3.70m 12'8" x 12'1"

Balcony
3.38m x 2.00m 11'1" x 6'6"

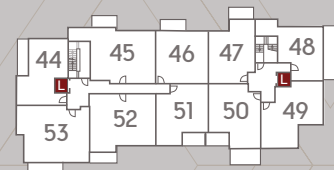
Internal Area
53.8 sq m 579 sq ft



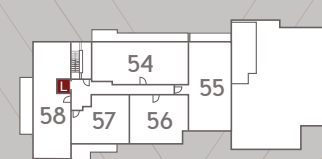
FIRST FLOOR



SECOND FLOOR



THIRD FLOOR

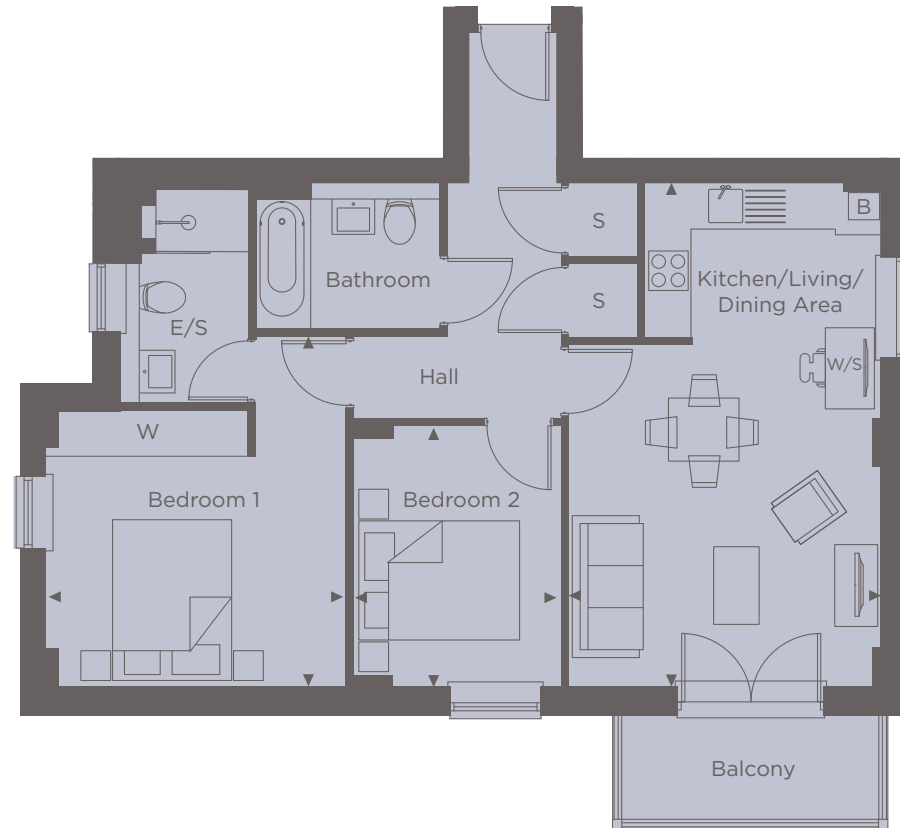


FOURTH FLOOR

APARTMENT 28 & 39

TWO BEDROOM

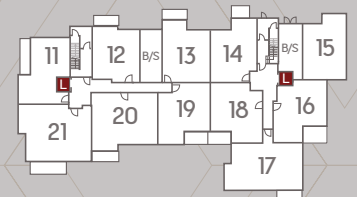
Kitchen/Living/Dining Area	
6.70m x 4.20m	22'0" x 13'8"
Bedroom 1	
4.60m x 3.90m	15'1" x 12'8"
Bedroom 2	
3.40m x 2.80m	11'2" x 9'2"
Balcony	
3.44m x 1.40m	11'3" x 4'6"
Internal Area	
71.4 sq m	768 sq ft



◀ Point from which maximum dimensions are measured. Dimensions are intended for guidance only and may vary by plus or minus 7.6cm/3". The plots indicate general layout only which may vary from other plots. Kitchen and bathroom layouts indicative only. W denotes wardrobe. S denotes storage. E/S denotes en-suite. W/S denotes workstation. L denotes lift. Please contact sales consultant for more information.



LOWER GROUND FLOOR



GROUND FLOOR

APARTMENT 40

ONE BEDROOM

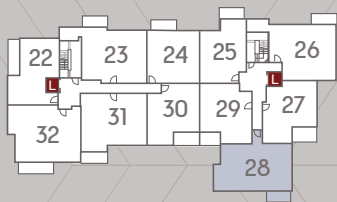
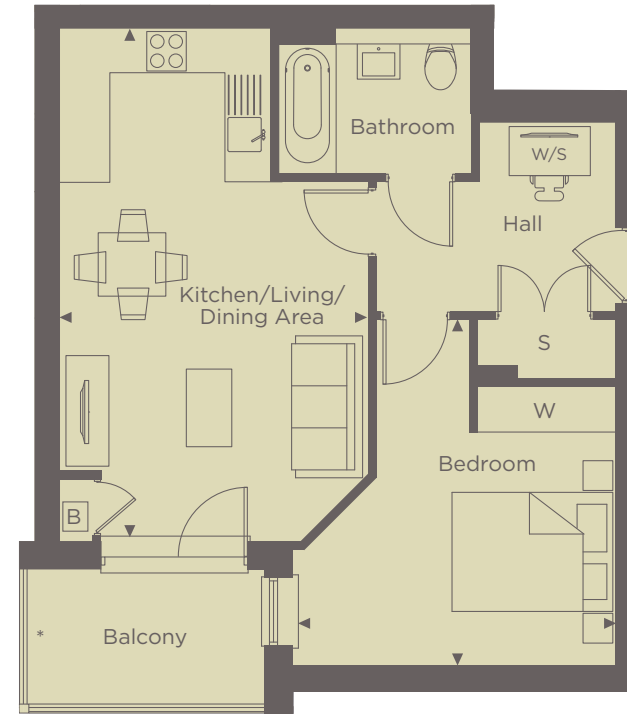
Kitchen/Living/Dining Area
6.70m x 4.00m 22'0" x 13'1"

Bedroom
4.60m x 4.30m 15'1" x 14'1"

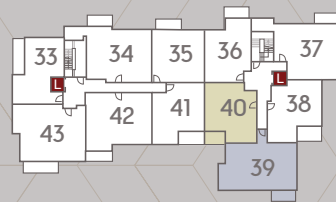
Balcony
3.26m x 1.80m 10'7" x 5'9"

Internal Area
54 sq m 581 sq ft

* Privacy screen

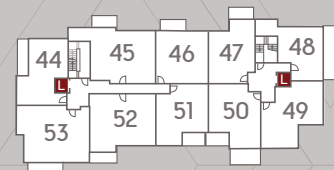


FIRST FLOOR

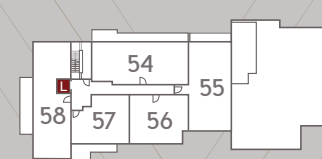


SECOND FLOOR

23



THIRD FLOOR



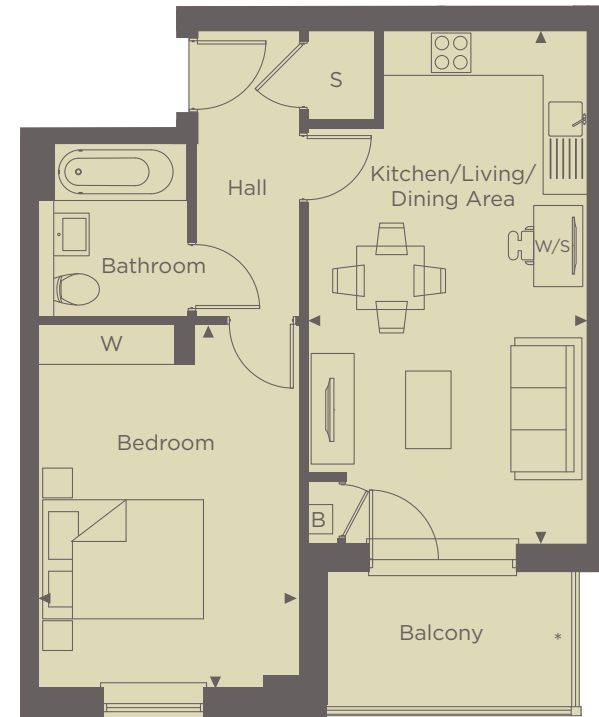
FOURTH FLOOR

APARTMENT 30 & 41

ONE BEDROOM

Kitchen/Living/Dining Area	
6.80m x 3.70m	22'3" x 12'1"
Bedroom	
4.80m x 3.50m	15'8" x 11'5"
Balcony	
3.26m x 1.80m	10'7" x 5'9"
Internal Area	
52.4 sq m	564 sq ft

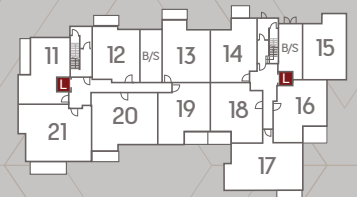
* Privacy screen



◀ Point from which maximum dimensions are measured. Dimensions are intended for guidance only and may vary by plus or minus 7.6cm/3". The plots indicate general layout only which may vary from other plots. Kitchen and bathroom layouts indicative only. W denotes wardrobe. S denotes storage. E/S denotes en-suite. W/S denotes workstation. L denotes lift. Please contact sales consultant for more information.



LOWER GROUND FLOOR



GROUND FLOOR



APARTMENT 31 & 42

TWO BEDROOM

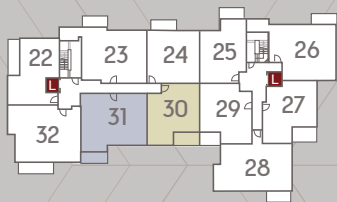
Kitchen/Living/Dining Area
8.20m x 3.87m 26'9" x 12'8"

Bedroom 1
5.20m x 2.80m 17'1" x 9'2"

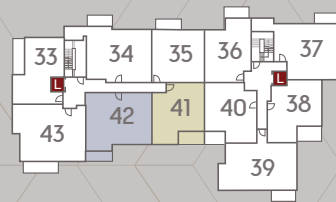
Bedroom 2
4.00m x 2.80m 13'1" x 9'2"

Balcony
3.77m x 1.40m 12'4" x 4'6"

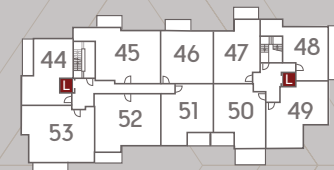
Internal Area
70.3 sq m 756 sq ft



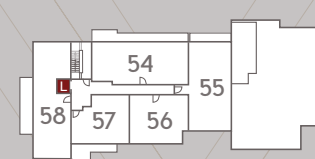
FIRST FLOOR



SECOND FLOOR



THIRD FLOOR



FOURTH FLOOR

APARTMENT 48

ONE BEDROOM

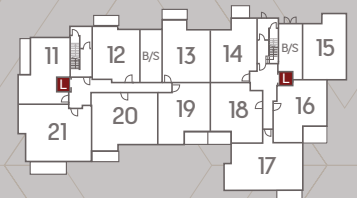
Kitchen/Living/Dining Area	
7.40m x 3.20m	24'3" x 10'5"
Bedroom	
3.50m x 3.10m	11'5" x 10'2"
Terrace	
7.85m x 2.97m	25'8" x 9'7"
Internal Area	
47.6 sq m	512 sq ft



◀ Point from which maximum dimensions are measured. Dimensions are intended for guidance only and may vary by plus or minus 7.6cm/3". The plots indicate general layout only which may vary from other plots. Kitchen and bathroom layouts indicative only. W denotes wardrobe. S denotes storage. E/S denotes en-suite. W/S denotes workstation. L denotes lift. Please contact sales consultant for more information.



LOWER GROUND FLOOR



GROUND FLOOR

APARTMENT 49

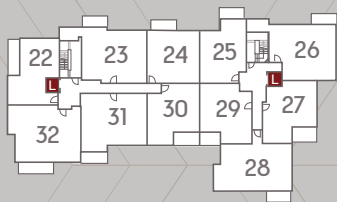
TWO BEDROOM

Kitchen/Living/Dining Area
6.10m x 4.20m 20'1" x 11'5"

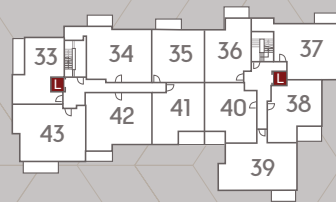
Bedroom 1
5.20m x 2.90m 17'0" x 9'6"

Bedroom 2
3.50m x 2.10m 11'4" x 6'8"

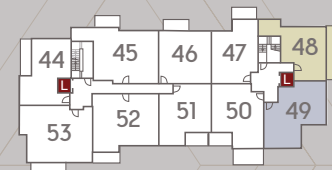
Internal Area
61.3 sq m 659 sq ft



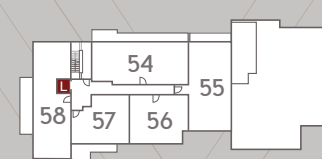
FIRST FLOOR



SECOND FLOOR



THIRD FLOOR



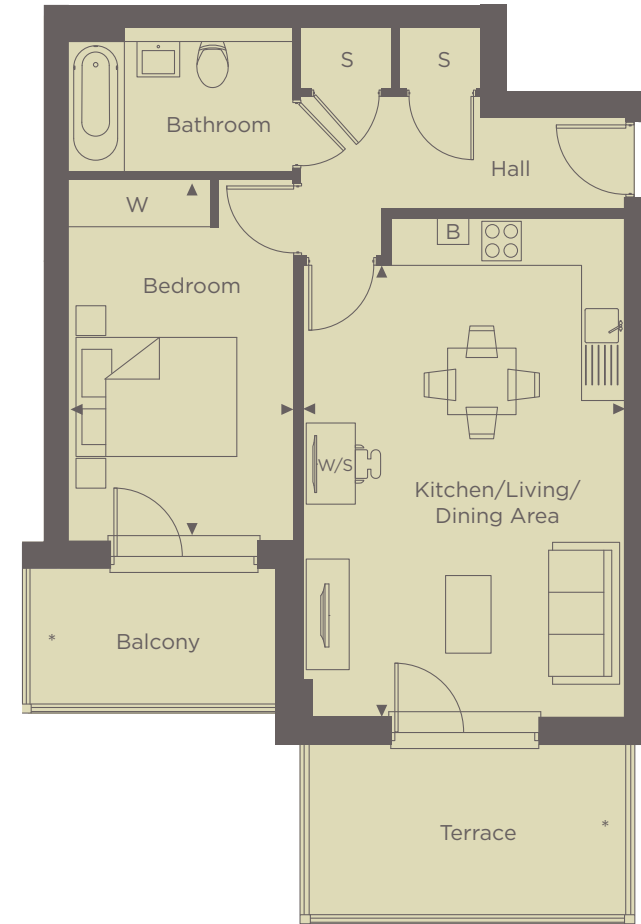
FOURTH FLOOR

APARTMENT 50

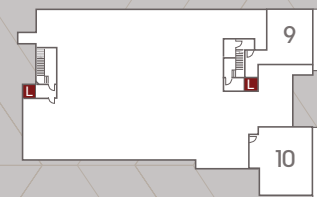
ONE BEDROOM

Kitchen/Living/Dining Area	
5.93m x 4.30m	19'6" x 13'8"
Bedroom	
4.70m x 2.90m	15'1" x 9'5"
Balcony	
3.20m x 1.80m	10'5" x 5'9"
Terrace	
4.36m x 2.26m	14'3" x 7'4"
Internal Area	
57.1 sq m	614 sq ft

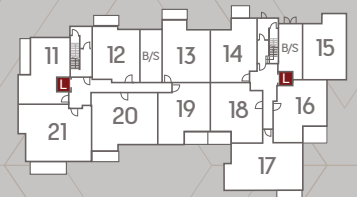
* Privacy screen



◀ Point from which maximum dimensions are measured. Dimensions are intended for guidance only and may vary by plus or minus 7.6cm/3". The plots indicate general layout only which may vary from other plots. Kitchen and bathroom layouts indicative only. W denotes wardrobe. S denotes storage. E/S denotes en-suite. W/S denotes workstation. L denotes lift. Please contact sales consultant for more information.



LOWER GROUND FLOOR



GROUND FLOOR

APARTMENT 51

ONE BEDROOM

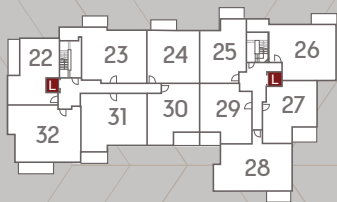
Kitchen/Living/Dining Area
6.80m x 3.70m 22'3" x 12'1"

Bedroom
4.80m x 3.50m 15'8" x 11'5"

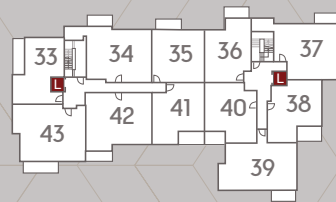
Balcony
3.20m x 1.80m 10'5" x 5'9"

Internal Area
52.4 sq m 564 sq ft

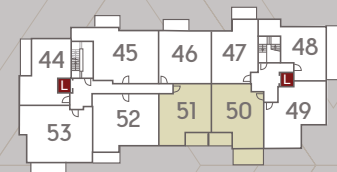
* Privacy screen



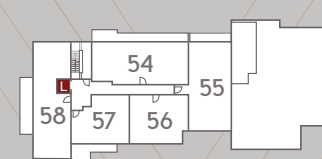
FIRST FLOOR



SECOND FLOOR



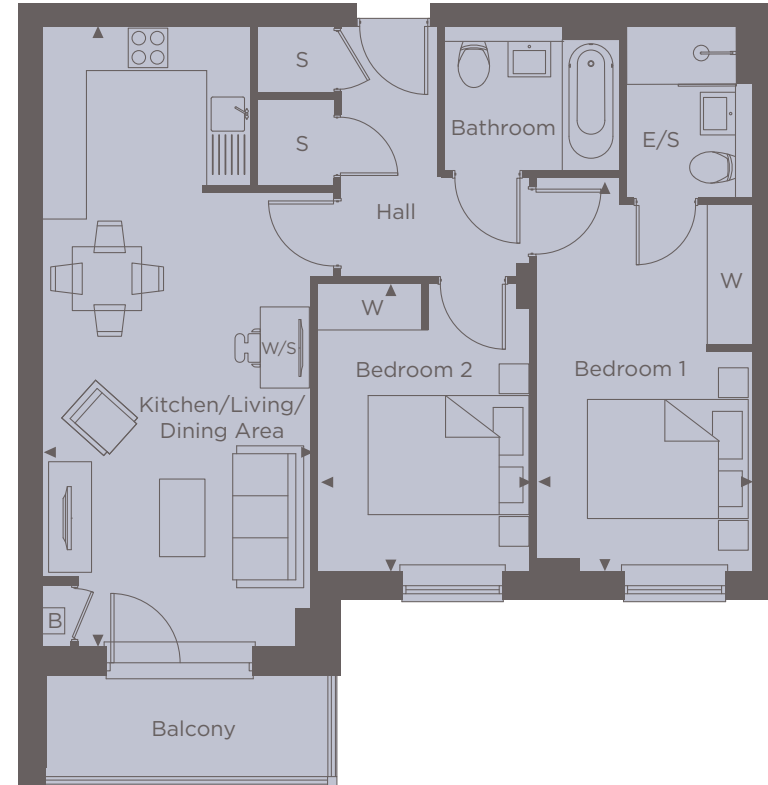
THIRD FLOOR



FOURTH FLOOR

APARTMENT 52
TWO BEDROOM

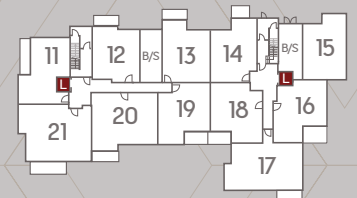
Kitchen/Living/Dining Area	8.20m x 3.60m	26'9" x 11'8"
Bedroom 1	5.20m x 2.80m	17'1" x 9'2"
Bedroom 2	4.00m x 2.80m	13'1" x 9'2"
Balcony	3.77m x 1.40m	12'4" x 4'6"
Internal Area	70.6 sq m	759 sq ft



◀ Point from which maximum dimensions are measured. Dimensions are intended for guidance only and may vary by plus or minus 7.6cm/3". The plots indicate general layout only which may vary from other plots. Kitchen and bathroom layouts indicative only. W denotes wardrobe. S denotes storage. E/S denotes en-suite. W/S denotes workstation. L denotes lift. Please contact sales consultant for more information.



LOWER GROUND FLOOR



GROUND FLOOR

INTRODUCING YOUR NEW PENTHOUSE



A STUNNING TWO BEDROOM TOP FLOOR PENTHOUSE BOASTING FANTASTIC VIEWS.

These unique luxury penthouses offer luxury living in a perfect location.

The hallway entices you in leading to the kitchen/living/dining area with a fully integrated kitchen boasting modern appliances, whilst also offering space for home working. Bedroom 1 features an en-suite, fitted wardrobes and some have access to the terrace offering the perfect place to relax in the morning. Some of the penthouses come with a second bedroom which have space for a double bed and also feature access to the terrace.

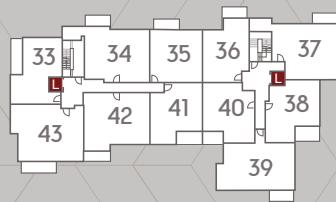
These penthouses are complete with a stylish bathroom offering sleek chrome accessories, plenty of storage space and parking.



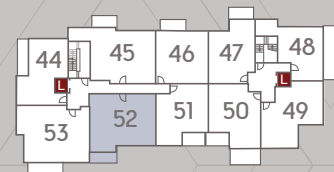
Show home photograph from previous Shanly Homes show home.



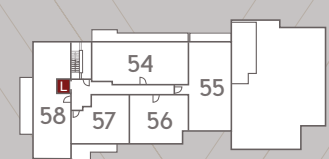
FIRST FLOOR



SECOND FLOOR



THIRD FLOOR



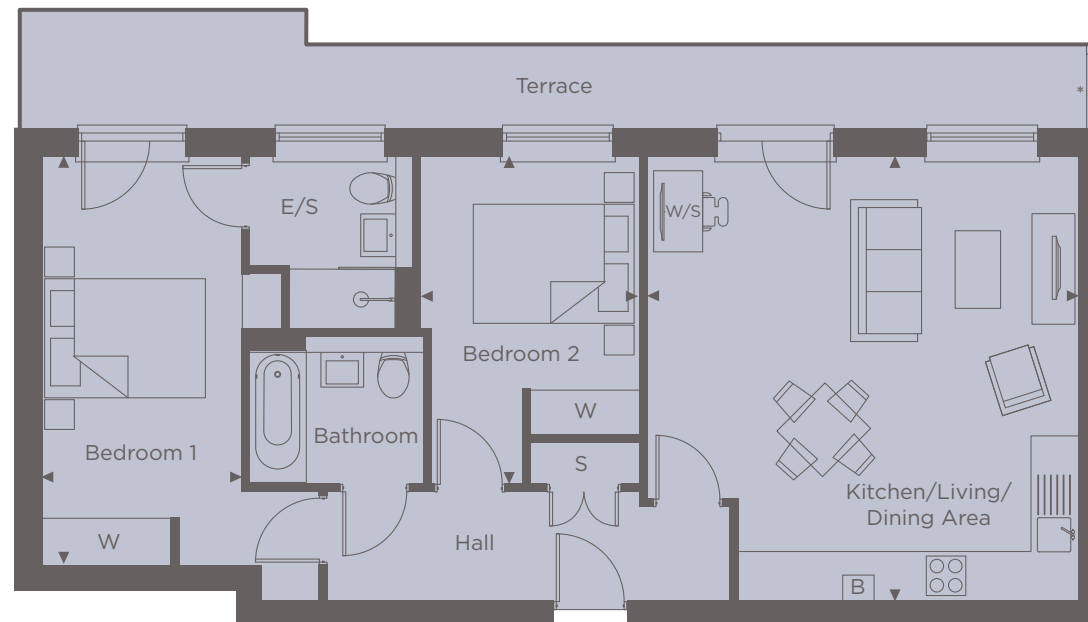
FOURTH FLOOR

PENTHOUSE 54

TWO BEDROOM

Kitchen/Living/Dining Area	
5.90m x 5.70m	19'6" x 18'7"
Bedroom 1	
5.40m x 2.70m	17'7" x 8'9"
Bedroom 2	
4.30m x 2.90m	14'1" x 9'5"
Terrace	
14.0m x 1.12m	45'9" x 3'7"
Internal Area	
78.7 sq m	847 sq ft

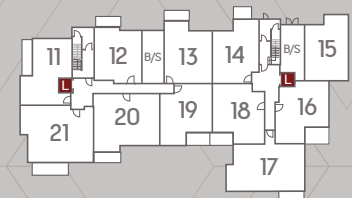
* Privacy screen



◀ Point from which maximum dimensions are measured. Dimensions are intended for guidance only and may vary by plus or minus 7.6cm/3". The plots indicate general layout only which may vary from other plots. Kitchen and bathroom layouts indicative only. W denotes wardrobe. S denotes storage. E/S denotes en-suite. W/S denotes workstation. L denotes lift. Please contact sales consultant for more information.



LOWER GROUND FLOOR



GROUND FLOOR

PENTHOUSE 55
TWO BEDROOM

Kitchen/Living/Dining Area
6.10m x 5.90m 20'0" x 19'6"

Bedroom 1
6.40m x 3.00m 21'0" x 9'8"

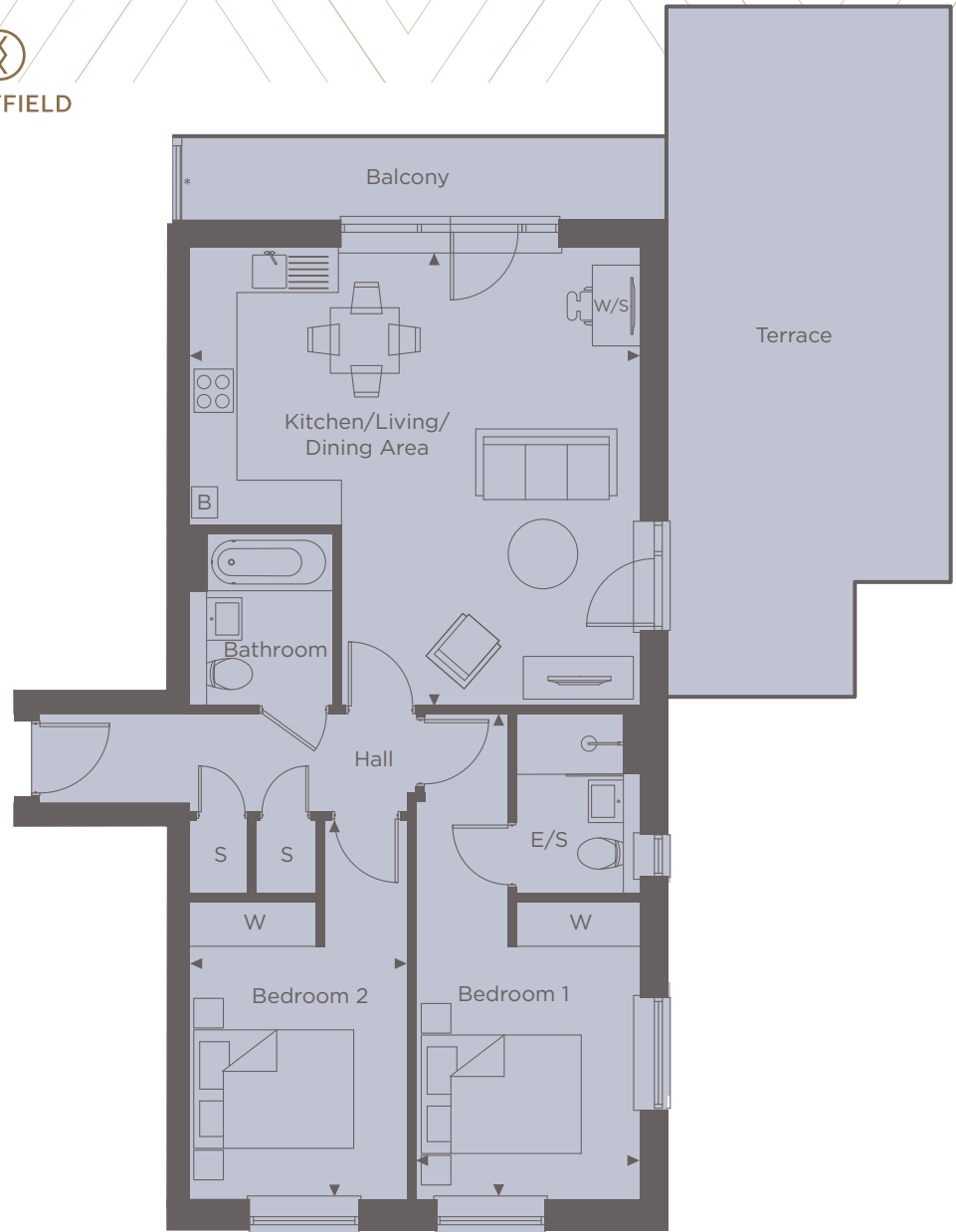
Bedroom 2
5.00m x 2.90m 16'4" x 9'5"

Balcony
6.30m x 1.10m 20'7" x 3'6"

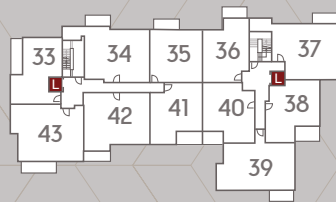
Terrace
9.16m x 3.73m 30'1" x 12'2"

Internal Area
77 sq m 828 sq ft

* Privacy screen

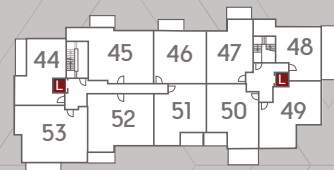


FIRST FLOOR

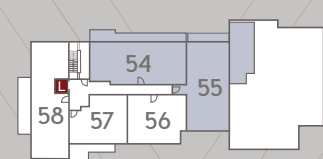


SECOND FLOOR

33



THIRD FLOOR



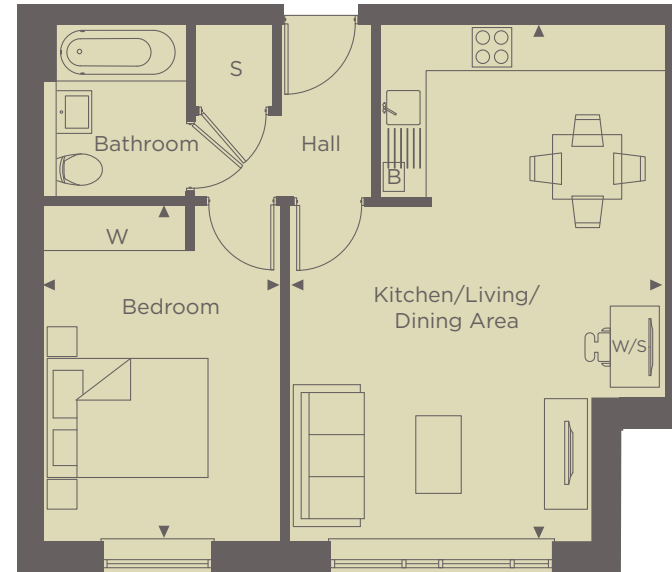
FOURTH FLOOR

PENTHOUSE 56
ONE BEDROOM

Kitchen/Living/Dining Area
6.80m x 4.90m 22'3" x 16'1"

Bedroom
4.50m x 3.20m 14'8" x 10'5"

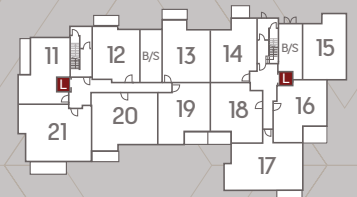
Internal Area
54.2 sq m 583 sq ft



◀ Point from which maximum dimensions are measured. Dimensions are intended for guidance only and may vary by plus or minus 7.6cm/3". The plots indicate general layout only which may vary from other plots. Kitchen and bathroom layouts indicative only. W denotes wardrobe. S denotes storage. E/S denotes en-suite. W/S denotes workstation. L denotes lift. Please contact sales consultant for more information.



LOWER GROUND FLOOR



GROUND FLOOR

PENTHOUSE 57

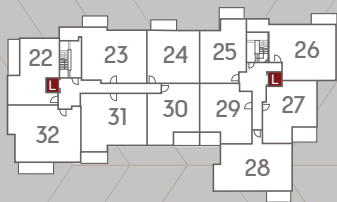
ONE BEDROOM

Kitchen/Living/Dining Area
6.90m x 3.90m 22'6" x 12'8"

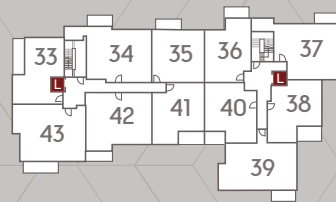
Bedroom
4.20m x 3.40m 13'8" x 11'2"

Terrace
6.53m x 2.43m 21'4" x 8'0"

Internal Area
49.5 sq m 532 sq ft

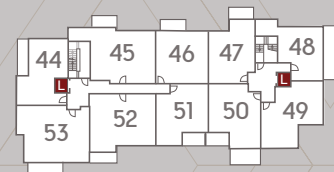


FIRST FLOOR

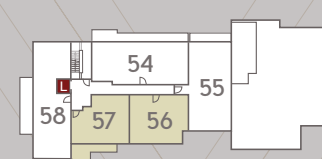


SECOND FLOOR

35



THIRD FLOOR



FOURTH FLOOR

PENTHOUSE 58
TWO BEDROOM

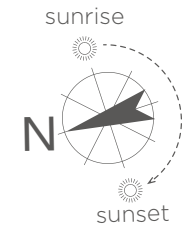
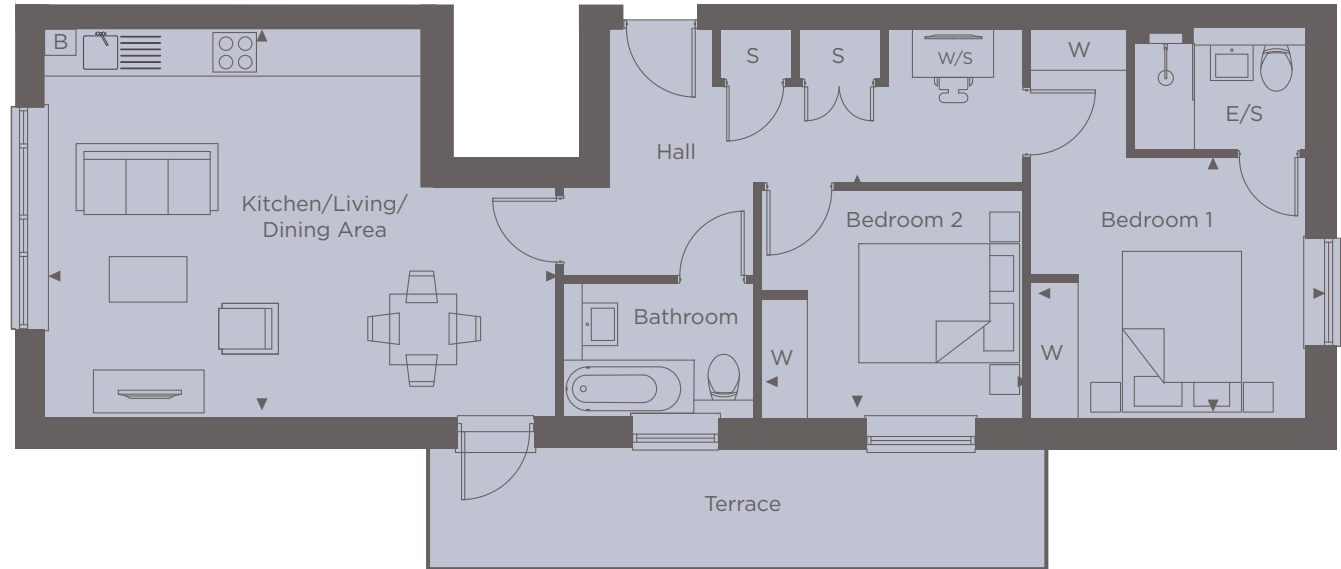
Kitchen/Living/Dining Area
6.80m x 5.10m 22'3" x 16'7"

Bedroom 1
3.42m x 3.70m 11'3" x 21' 1"

Bedroom 2
3.44m x 3.00m 11'2" x 9'10"

Terrace
8.30m x 1.65m 27'2" x 5'4"

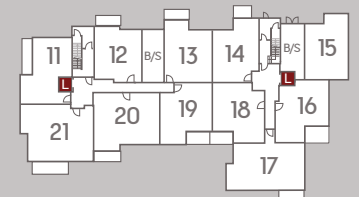
Internal Area
79.7 sq m 857 sq ft



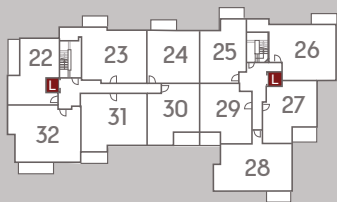
◀ Point from which maximum dimensions are measured. Dimensions are intended for guidance only and may vary by plus or minus 7.6cm/3". The plots indicate general layout only which may vary from other plots. Kitchen and bathroom layouts indicative only. W denotes wardrobe. S denotes storage. E/S denotes en-suite. W/S denotes workstation. L denotes lift. Please contact sales consultant for more information.



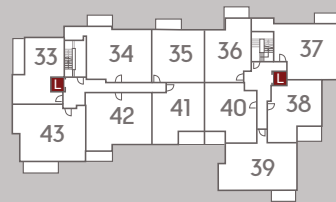
LOWER GROUND FLOOR



GROUND FLOOR



FIRST FLOOR

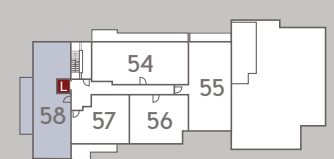


SECOND FLOOR

37



THIRD FLOOR



FOURTH FLOOR



Show home photography from previous Shanly Homes show home.

ILLUMINATING STYLE

KITCHEN

Our professionally designed and bespoke kitchens incorporate the following high quality features and appliances:

- Contemporary handle-less matt kitchen units featuring soft closing doors and drawers
- 20mm composite stone worktop with 100mm upstand
- Composite stone splashback behind hob
- Integrated Siemens induction hob
- Integrated Siemens oven
- Integrated Siemens microwave
- Extractor hood
- Integrated full height fridge/freezer
- Integrated washer/dryer
- Integrated dishwasher
- Stainless steel sink
- Chrome mixer tap
- Clever storage solutions
- Stylish LED feature lighting to the underside of the wall units
- Recessed LED downlights to kitchen



INTERIOR

- High efficiency compact gas boiler
- Underfloor heating
- Double glazed PVCu windows providing a high level of thermal insulation and reduced heat loss, all windows have security locks
- Vicaima Visual Sensation internal doors with cross directional woodgrain
- Chrome switches and sockets to kitchens above worktops. White in all other areas
- Individually switched LED and pendant lighting (where specified)
- Media plate to living room providing connectivity to your audio visual devices
- Wired for Sky Q and terrestrial television (Sky account required)
- Quality fitted wardrobes with shelf and hanging rail to Bedroom 1 and Bedroom 2
- Mains powered smoke detectors with battery back up

BATHROOM & EN-SUITES

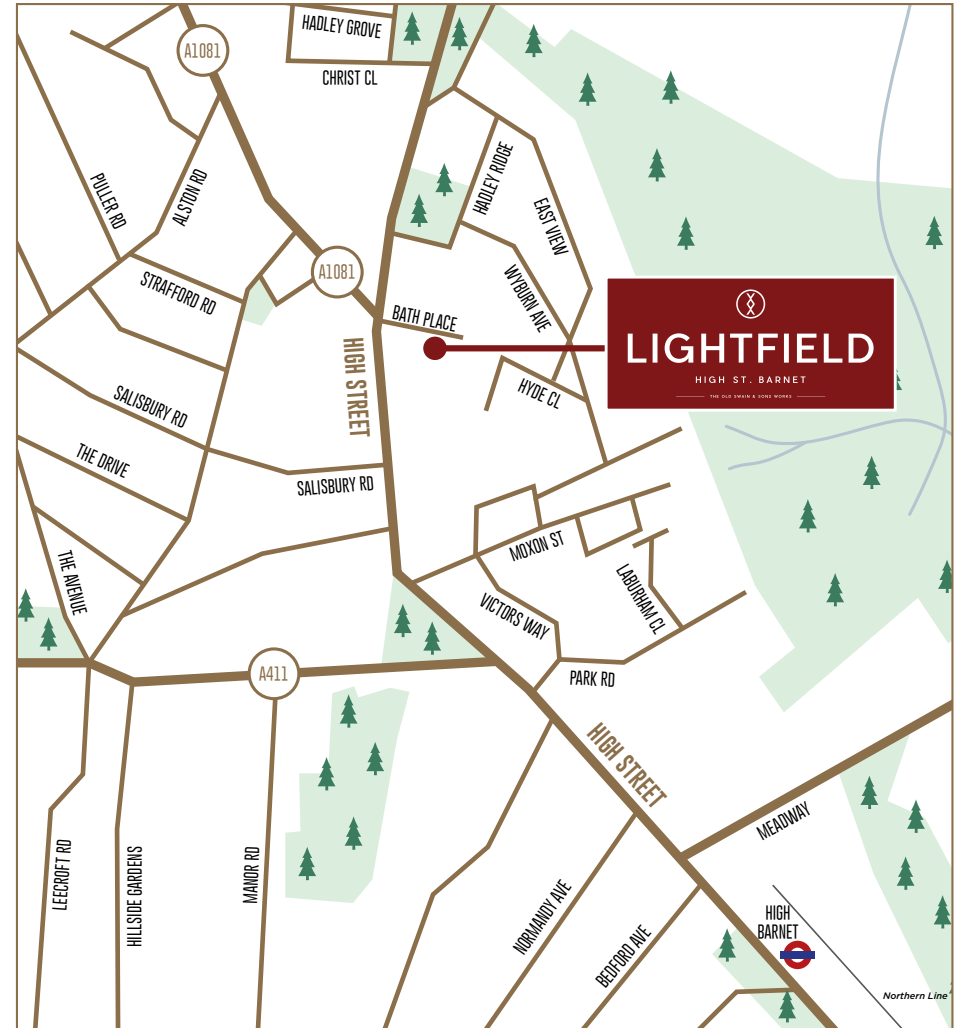
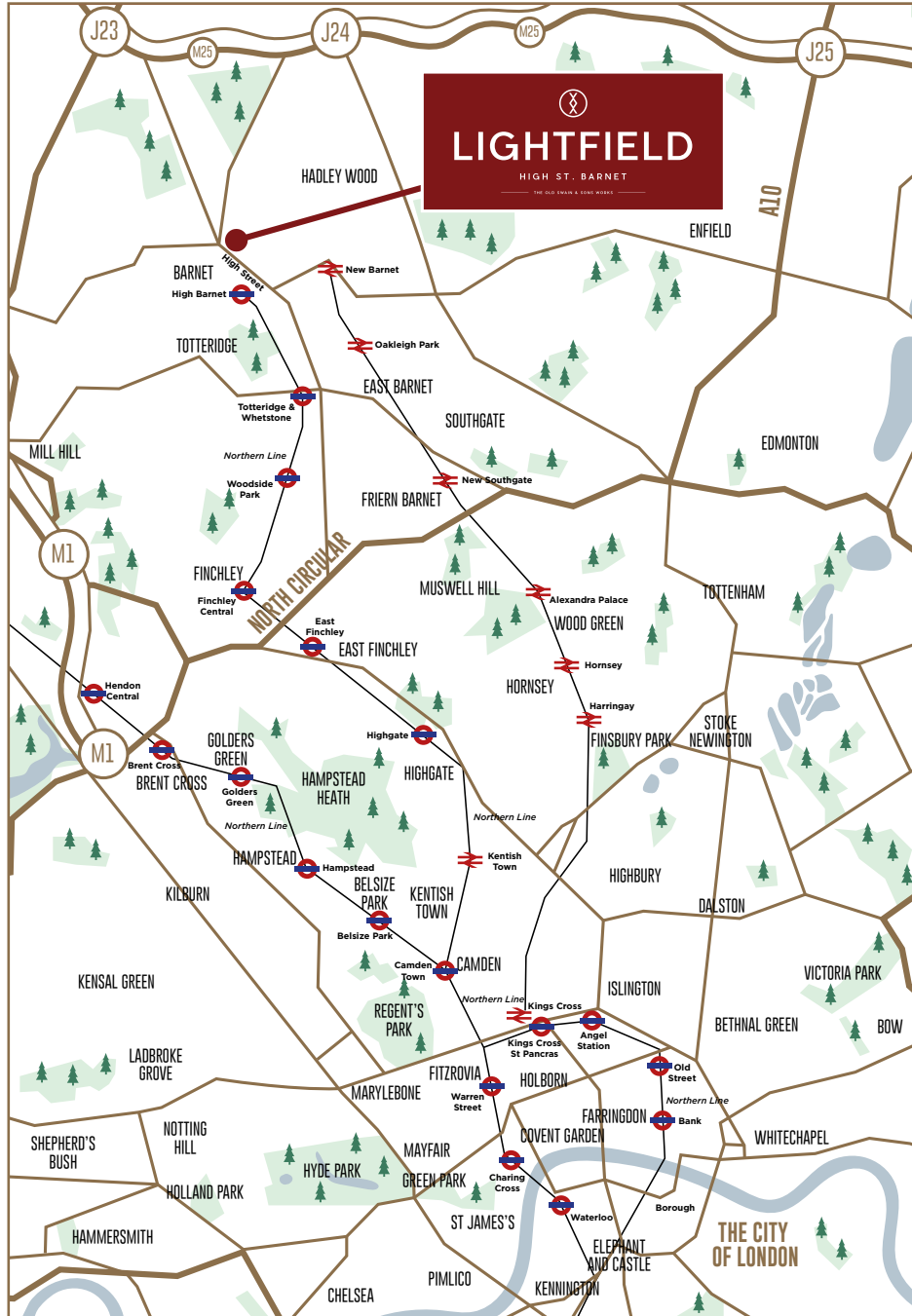
- Ideal Standard white porcelain sanitaryware with soft closing toilet seats
- Contemporary chrome brassware throughout
- Thermostatically controlled showers
- Low profile shower tray
- Toughened glass and stainless steel shower enclosures to certain plots
- Luxury Minoli tiles to floors and part feature walls. Full height tiling around bath
- Mirror over basin
- Chrome heated towel rail
- Recessed LED downlights
- Extractor fans with delayed cut off

ENVIRONMENTAL FEATURES

- We take our responsibilities to our environment seriously and aim to incorporate the latest technology to conserve natural resources
- High level of wall, floor and roof insulation to limit heat loss during the winter
- Energy and water efficient kitchen appliances
- Dual flush mechanisms to all toilets to reduce water usage
- Low energy light fittings to all apartments
- The apartments at Lightfield are of concrete frame with masonry infill.



LIGHTFIELD



LIGHTFIELD'S HIGH STREET LOCATION MEANS THE HIGH STREET SHOPS AND AMENITIES ARE CONVENIENTLY CLOSE, WHENEVER YOU WANT TO GET SOMETHING SPECIAL FOR DINNER OR MEET FRIENDS FOR A COFFEE.



COMPUTER GENERATED IMAGES USED IN THIS BROCHURE ARE INTENDED TO BE A GENERAL GUIDE TO THE APPEARANCE OF THE DEVELOPMENT. HOWEVER, FROM TIME TO TIME, IT IS NECESSARY FOR US TO MAKE ARCHITECTURAL CHANGES. KITCHEN, LANDSCAPING AND BATHROOM LAYOUTS MAY VARY FROM THOSE SHOWN; WE OPERATE A PROCESS OF CONTINUOUS PRODUCT DEVELOPMENT AND THEREFORE FEATURES MAY CHANGE FROM TIME TO TIME. THIS INFORMATION DOES NOT CONSTITUTE A CONTRACT OR WARRANTY. THEREFORE PROSPECTIVE PURCHASERS SHOULD CHECK THE LATEST PLANS AND SPECIFICATION WITH OUR SALES OFFICE. MAPS ARE NOT TO SCALE - APPROXIMATE JOURNEY TIMES TAKEN FROM NATIONAL RAIL AND AA WEBSITE - AUGUST 2023. REF: 1331.

OUR COMMITMENT TO YOU



LIGHTFIELD



Elva Lodge, Maidenhead

YOUR HOME

When you buy a Shanly home, you can be confident that you are buying a home of excellent build quality and exquisite design.

Since the development of our first home in 1969, we have remained committed to developing high-specification, sustainable, architecturally innovative homes, designed to complement the local environment and improve the quality of life for those who live there.

Our award-winning team take great pride in building stunning homes in desirable locations, enhancing landscapes and building communities across London and the South East.

All our new homes benefit from an industry recognised 10-year insurance backed guarantee. Shanly Homes is a registered developer with the NHQB.

YOUR ENVIRONMENT

Our commitment to creating the best possible living environment does not stop at the design and build of our homes. We also place a great deal of emphasis on the wider environment.

We appreciate the importance of green space and will always look to enhance the natural environment through beautiful landscaping design and the preservation of protected areas.

From the procurement of energy efficient and sustainable materials to the use of thermal efficient methods of build and effective disposal of waste, our team work hard to ensure that we minimise the environmental impact of our operations without compromising on quality.

Our partnership with Community Wood Recycling is also enabling us to further reduce our landfill usage and increase the volume of waste being re-used, re-sold or recycled.

We are committed to making life easier for the wildlife living within our natural habitats so we fit bird boxes in the gardens and communal areas of all our developments and provide ongoing financial support to Freshwater Habitats Trust which aims to protect and preserve freshwater life.

We pay for a year-long RSPB subscription for our new homes customers which enables them to visit any RSPB centre in the UK free-of-charge plus receive newsletters and updates from the RSPB.

We also provide ongoing financial support to Plant Heritage to conserve the diversity of garden plants for people to use and enjoy.



Widbrook Lodge, Maidenhead





LIGHTFIELD

YOUR COMMUNITY

As well as building communities, we are also extremely proud to support those most in need within those communities via the Shanly Foundation, which is financed entirely by the profits generated by the Shanly Group of companies.

To date Shanly Group and Shanly Foundation have contributed in excess of £25m to support hundreds of local community groups and charitable organisations each year to provide financial assistance and improve the quality of life for those most in need across our communities.



Thameside, Windsor



SHANLY
HOMES

SHANLYHOMES.COM